

Council of Governors
11th May 2011

Chief Executive's Report

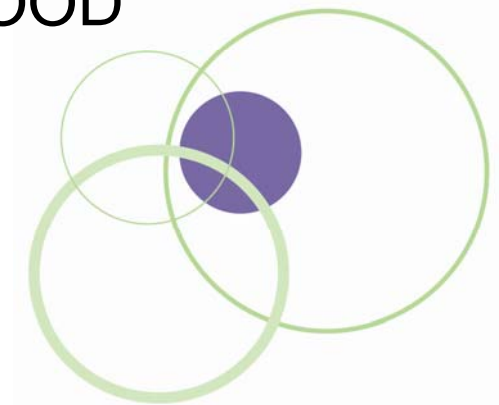
Andrew Foster
Chief Executive

*your hospitals, your health, **our priority***

Performance update

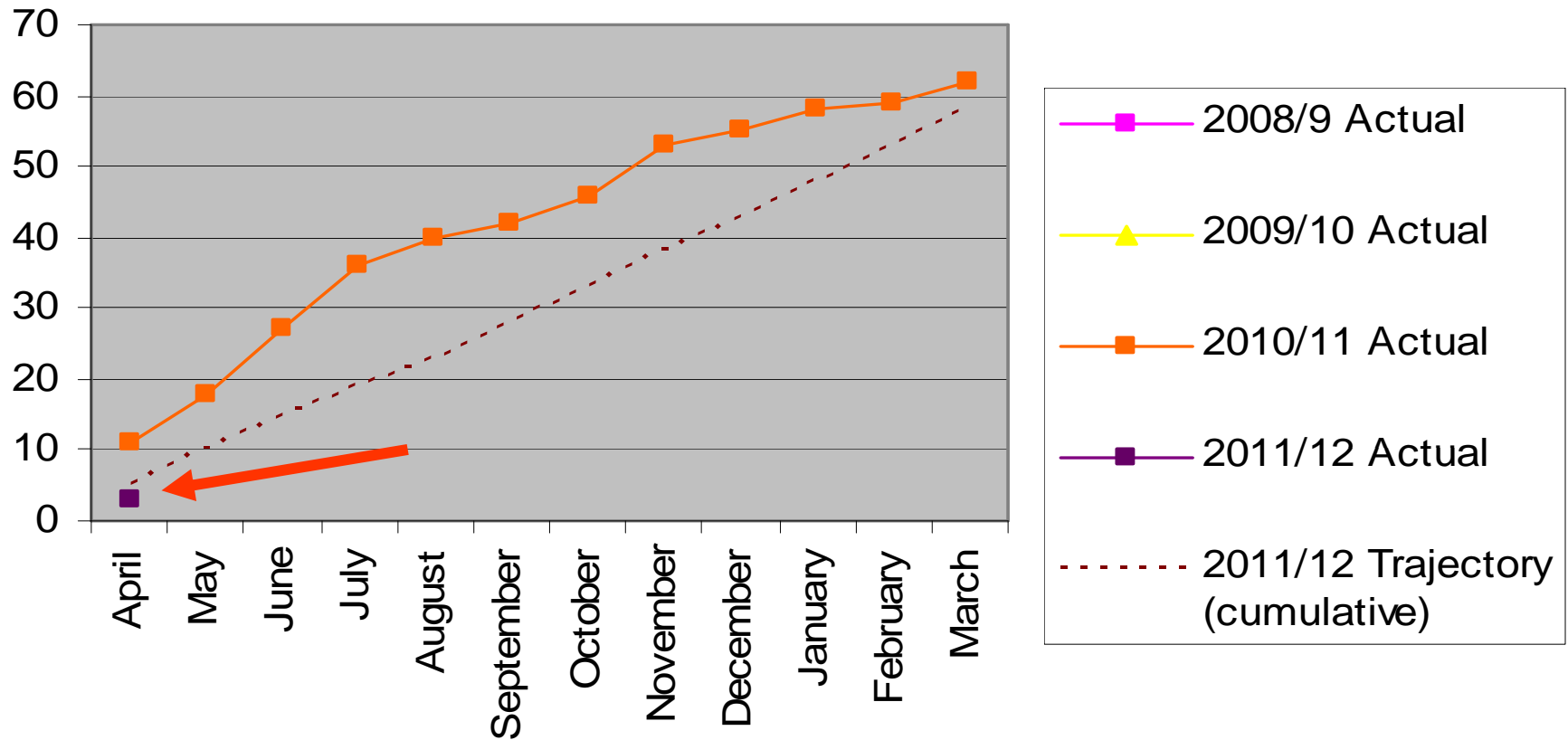
- One MRSA in April – a poor start to the year
- Three cases of C Diff (monthly maximum is five)
- Latest mortality figure much improved
- A&E in April was 99.2% the best in the North West
- Patient Environment Action Team (PEAT) scores:
 - Privacy and Dignity & Environment – GOOD
 - Food - EXCELLENT

your hospitals, your health, our priority



Clostridium Difficile

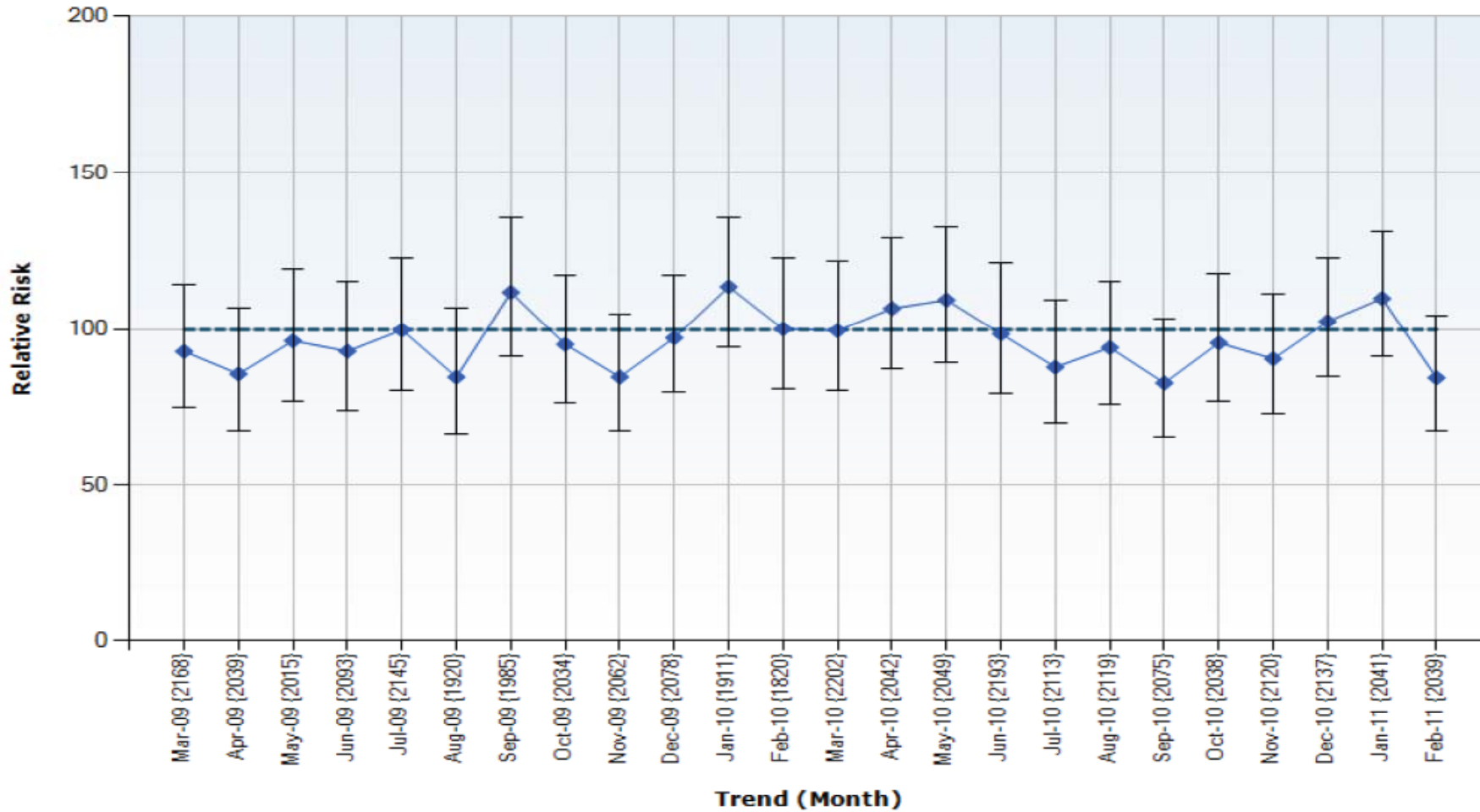
C.difficile inpatient Cases 2010/11 onwards



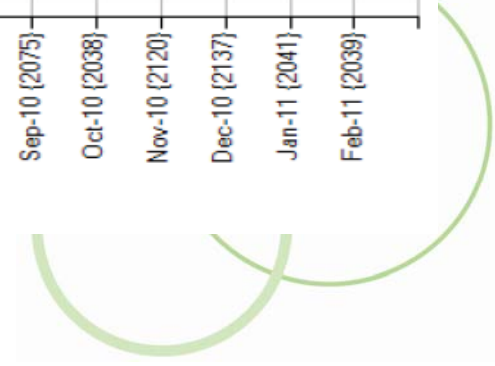
your hospitals, your health, our priority

HSMR – Mar 2009 to Feb 2011

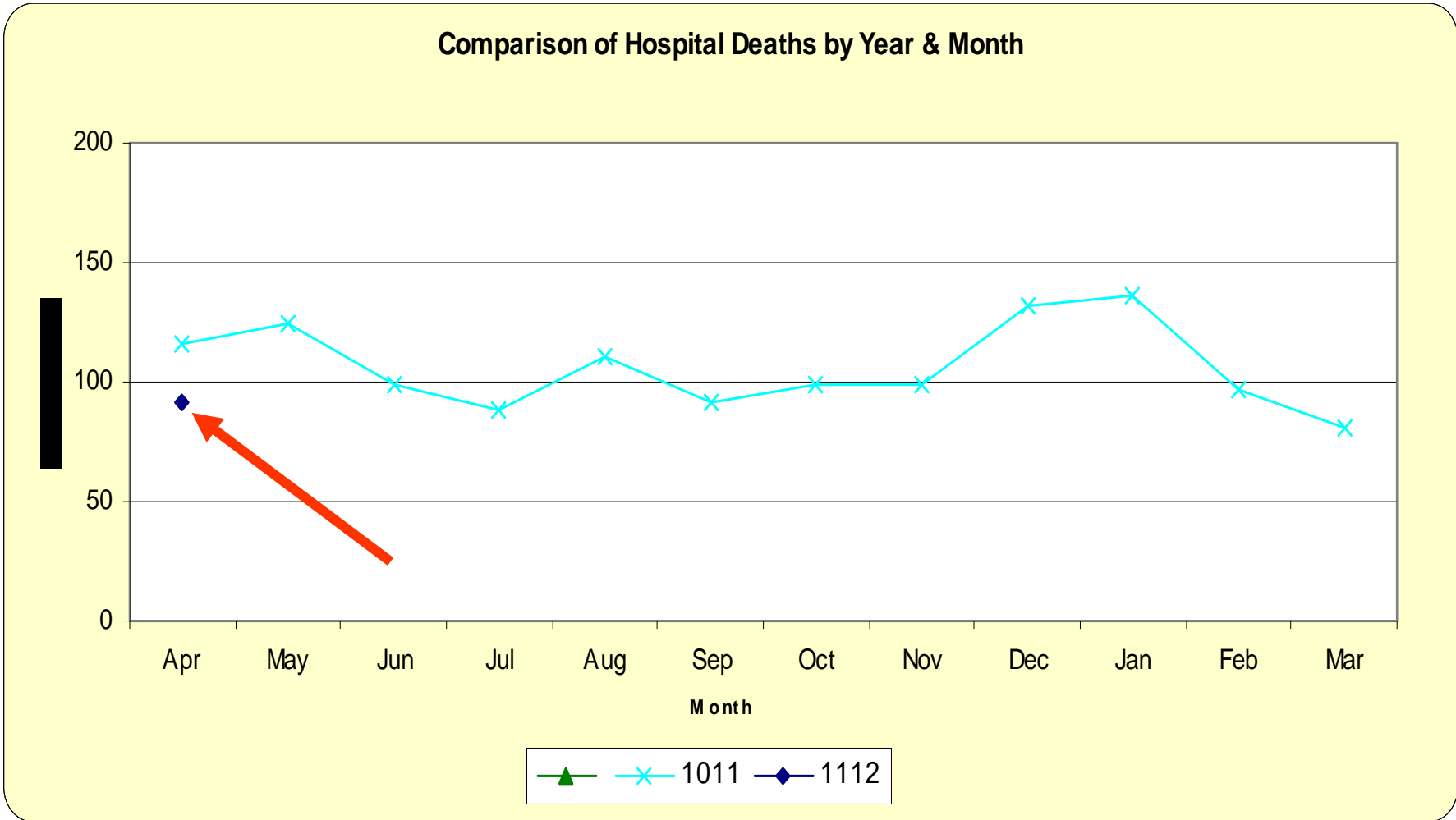
Mortality (in-hospital) | Diagnoses - HSMR



your hospitals, your health, our priority



Deaths in Hospital 09-10 and 10-11

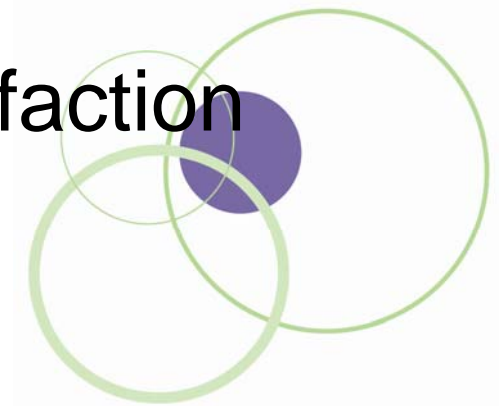


your hospitals, your health, our priority

Challenges for this year

- Improving the patient experience
- Delivering a cost reduction of £13.8m
- Transferring around 100 staff from ALW CH and concentrating them on admission avoidance
- Developing an affordable ten year capital plan
- Improving staff morale and satisfaction

your hospitals, your health, our priority



Do we have a clear strategy?



Yes we do

- **Mission** – *“to provide the best quality healthcare for all our patients”*
- **Vision** – *“to be in the top 10% for everything we do”*
- **Values** – as the NHS Constitution
- **Strategy** – *“to be safe, effective and caring”*
- **Seven Strategic Themes.**

your hospitals, your health, our priority

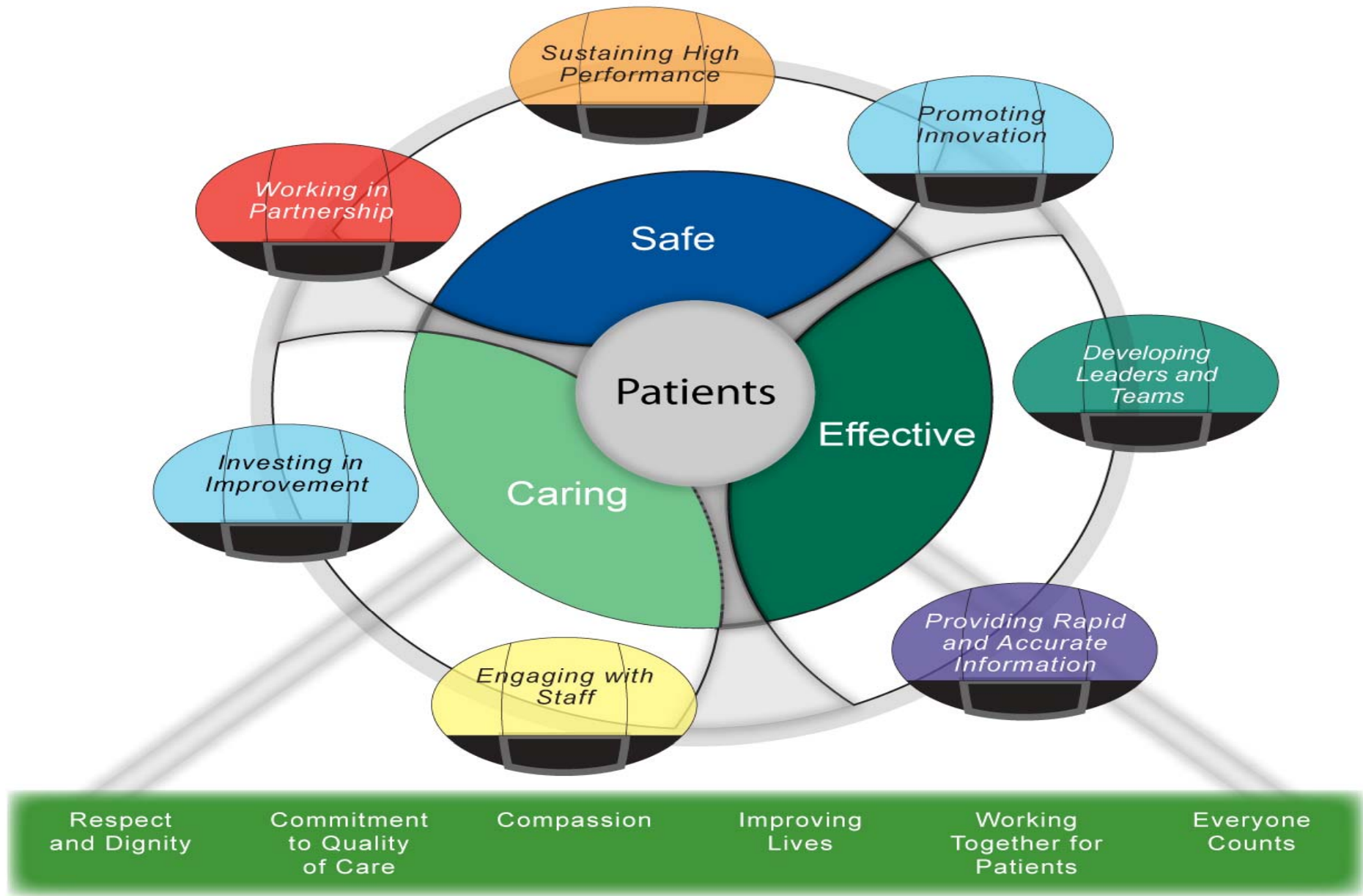


Corporate objectives

1. **Performance** - Green with Monitor and FRR4
2. **Innovation** – Invest £300k to support CIP
3. **Leadership** – New development programme
4. **Information** – Paper light, integrated IT
5. **Staff engagement** – Improve staff survey score
6. **Investment** – Service and site implementation
7. **Partnership** – Effective demand management

your hospitals, your health, our priority





THE WWL WHEEL