

Safe Staffing Indicators



January 2016

Average fill rate - Day Shift

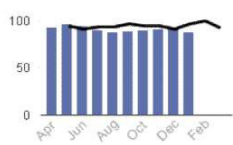
Registered Nurses\Midwives - Day Shift



■ 2015-2016
— 2014-2015

84.6
Jan 2016
85.0
YTD

Care Staff - Day Shift



■ 2015-2016
— 2014-2015

86.5
Jan 2016
89.8
YTD

Average fill rate - Night Shift

Registered Nurses\Midwives - Night Shift



■ 2015-2016
— 2014-2015

90.9
Jan 2016
92.2
YTD

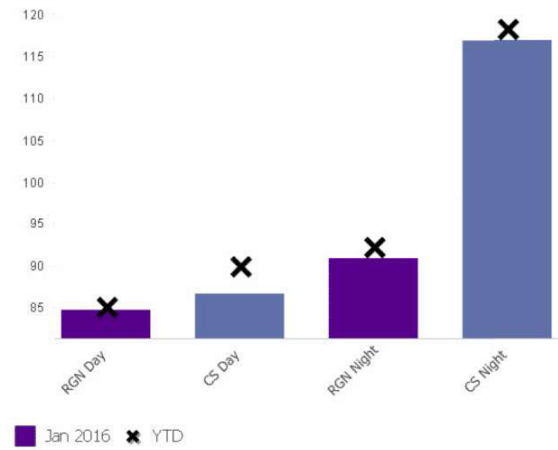
Care Staff - Night Shift



■ 2015-2016
— 2014-2015

116.9
Jan 2016
118.2
YTD

Jan 2016 Fill Rate against YTD



ESR NHS England - TBC

The detail regarding established versus actual is contained within the full exception report.