

Having a Flexible Sigmoidoscopy

Patient Information

Endoscopy Department



The Patient Information Leaflets page on the Trust website is available on the link:
<https://www.wvl.nhs.uk/patient-information-leaflets> or scan the QR code.

Author ID: SP/CSL
Leaflet ref: End 003
Version: 11
Leaflet title: Having a Flexible Sigmoidoscopy
Last review: July 2025
Expiry Date: July 2027

Our Values**People at
the Heart****Listen and
Involve****Kind and
Respectful****One
Team**

Please read through this leaflet carefully as soon as possible. Do not leave it to just before your appointment, as this may cause problems preparing for your test.

About this leaflet

This leaflet has been written with the help of patients and experts. It gives you important information about having a flexible sigmoidoscopy (a test to look inside your bowel). You should read this entire leaflet carefully. It explains the benefits and risks of the test and alternatives. If you are not sure about having the test or have any questions, please talk to your doctor or nurse before your appointment.

Essential Checklist Prior to Test:

- **Ensure you know if you need Bowel Preparation for this test or whether the doctor who has arranged this test for you would like you to have an enema on the day of the test to clear your bowel. You can contact us on the numbers below.**
- **If Bowel Preparation has been recommended, the medication can be obtained from the hospital pharmacy and ensure you follow instructions for a Low Fibre Diet for 3 days before the test.**
- **If you are taking Mounjaro for weight loss, please stop 1 week before your procedure as this delays your stomach emptying, if taking for diabetes, please discuss with your diabetic nurse specialist.**
- **Obtain Senna 7.5mg tablets (4 tablets) from your local pharmacy/supermarket.**
- **Iron supplements please stop 7 days prior to test**
- **Codeine, Loperamide, or Co-phenotrope should be stopped 3 days prior to your test**
- **Continue to take all essential prescribed medications including on the day of your test – for example, heart medication, blood pressure medication**
- **Provide a list of ALL your current medication.**
- **If sedation is required, it is essential you are accompanied and that someone can care for you for the first 24hrs after the procedure. (For more information, see page 7 and 8)**

Diabetes:

Tablet controlled: do not take your medication when fasting.

Insulin controlled: please contact your Diabetic team for advice.

Please contact the department if you are taking medication to thin your blood (listed below) and have not previously been given instructions:

- Warfarin or acenocoumoral (Sinthrome®)
- Clopidogrel (Plavix®) or dipyridamole (Persantin® or Asasantin®)
- Ticagrelor (Brilique®) or prasugrel (Efient®)
Dabigatran (Pradaxa®), Apixaban (Eliquis®), Rivaroxaban (Xarelto®),
Edoxaban (Lixiana®)

Endoscopy Unit at **Royal Albert Edward Infirmary** 01942 822450

Endoscopy Unit at **Leigh Infirmary** 01942 264236 or 01942 264974

Cancellations

If you are unable to keep this appointment, please let us know as soon as possible on 03005554567 option 4. This will allow us to give your appointment to another patient and rearrange another one for you.

In this leaflet

Please read through the following sections in this leaflet carefully:

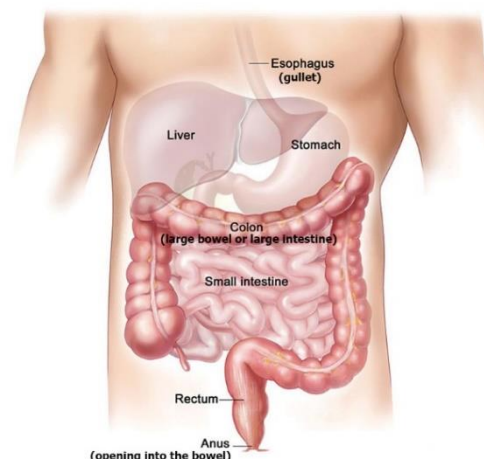
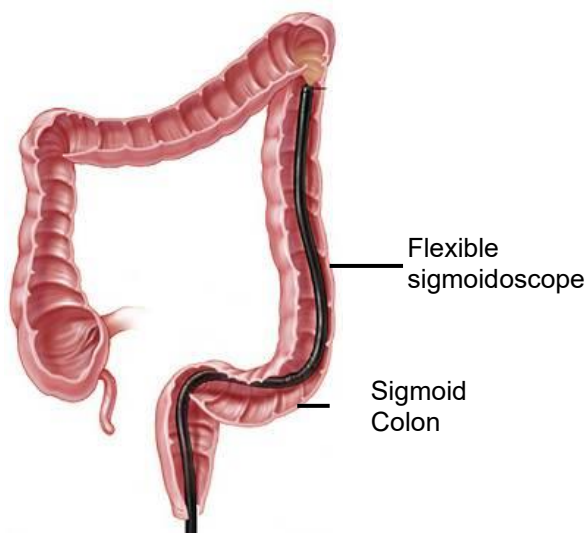
1. What is a flexible sigmoidoscopy?
2. Why do I need to have a flexible sigmoidoscopy?
3. Getting ready for your flexible sigmoidoscopy
4. What will happen when I arrive?
5. What happens during the test?
6. What happens after the test?
7. What are the risks and side effects of this test?
8. What are the alternatives?

1. What is a flexible sigmoidoscopy?

Your doctor has advised that you should have a test to look inside the left half of your large bowel (also called the large intestine or the colon). The medical name of the test is a flexible sigmoidoscopy. It is usually carried out by **an endoscopist**, who is a doctor or a specialist nurse.

The instrument used for this test is called a flexible sigmoidoscope or colonoscope. We use the word endoscope in this leaflet to indicate either of these instruments. The endoscope is a long flexible tube about the same thickness as your little finger. A bright light and camera at the end allows the doctor to see the lining of your large bowel on a television screen.

During the test, the endoscopist may need to take some tissue samples (biopsies) from the lining of the large bowel for further analysis. This is completely painless. Photographs may also be taken for your medical records.



2. Why do I need to have a flexible sigmoidoscopy?

You have been advised to have this test to try to find the cause of your symptoms. This test helps your doctor to decide what treatment you may need and if further tests are needed.

There are many reasons why this test may be recommended, and your doctor will go through this with you. Common reasons why this test is done include:

- a change in your usual bowel habit to constipation or diarrhoea
- bleeding from the back passage
- to review a known bowel condition (e.g. inflammatory bowel disease, colonic polyps)
- to assess or treat an abnormality seen on other tests, such as barium enema or CT scan

If none of these apply to you, your doctor will explain why you need to have this test.

3. Getting ready for your flexible sigmoidoscopy

Your usual medication

If you are taking any of the medication listed on page 2 of this leaflet, please contact the endoscopy unit as soon as possible.

You can continue to take your usual regular medication as normal, except for drugs such as codeine, loperamide (Imodium®) or co-phenotrope (Lomotil®), which need to be stopped 3 days before your test.

If you are taking iron tablets or liquid, please stop them completely at least one week before your test.

Please follow a Low Fibre Diet 3 days before your test:

Foods that are generally allowed on a low fibre diet include:

- White bread without nuts and seeds
- White rice, plain white pasta and crackers
- Canned or well-cooked vegetables and fruits without skins or seeds
- Fruit and vegetable juice with little or no pulp, fruit-flavoured drinks and flavoured waters
- Tender meat, poultry, fish, eggs and tofu
- Milk and foods made from milk — such as yogurt, pudding, ice cream, cheeses
- Butter, margarine, oils and salad dressings without seeds

You should avoid:

- Whole-wheat or whole-grain breads, cereals
- Brown or wild rice and other whole grains, such as oats, kasha, barley and quinoa
- Dried fruits and prune juice
- Raw fruit, including those with seeds, skin or membranes, such as berries
- Raw or undercooked vegetables, including sweetcorn
- Dried beans, peas and lentils
- Seeds and nuts and foods containing them, including peanut butter and other nut butters
- Coconut
- Popcorn

Taking Senna tablets three days prior to sigmoidoscopy

You must take Senna 7.5mg tablets three days prior to your date for sigmoidoscopy.

Please take 2 tablets (15mg) in the evening for two consecutive days. These can be obtained from any pharmacy or supermarket.

This is to enhance the quality of the bowel preparation prior to your test. You do not need to take Senna tablets one day before the test. When you have started the bowel cleansing preparation, see below.

Taking bowel cleansing preparation

You will need to take this medicine at home one day before the test. The most common medicines used are: Plenvu® Moviprep® or Picolax®. If you have not received your prescription, please contact the hospital pharmacy to arrange for collection. Please take the bowel cleansing preparation as per instructions given to you on collection and in the pack.

It is extremely important that you adhere to the instructions for taking your bowel preparation, so that your bowel is clean before your test. If it is not clean, it may not be possible to see the lining of the bowel adequately during the test.

If you have any questions, please contact the Endoscopy Unit as soon as you can and we will assist you.

Taking a medicine to empty your bowel

It is extremely important that the left side of your bowel is completely empty before a flexible sigmoidoscopy. If it is not empty, it will not be possible to see the lining of the bowel adequately during the test.

Medicine to clear your bowel and instructions on how to take it will be sent with your appointment letter. You will need to take the medicine at home the day before the test.

On the day of your flexible sigmoidoscopy, you can take small amounts of clear fluids until you arrive for your appointment.

Sometimes, an enema on the day of the test is all that is required instead of the drugs mentioned above. Your doctor will inform you of this, if this is the case. If you need an enema, it will be given to you shortly before your procedure in the Endoscopy Unit. An enema is a liquid preparation which is squirted into the back passage (anus) and triggers a bowel movement. This will help to make sure that the left side of your bowel is clear.

4. What will happen when I arrive?

When you arrive for your flexible sigmoidoscopy, you will be greeted by our reception staff and asked to sit in the waiting room. Your nurse will ask you to come through to the preparation area shortly before your test. The nurse will need to check your identity and go through any medical conditions, medication and allergies, to ensure it is safe to start

the test. Your oxygen levels, blood pressure and heart rate will be recorded and if you are diabetic, your blood glucose level will also be measured.

The nurse will also check that arrangements have been made for your journey home. If you are being collected, please ensure that you give us the phone number of the person who will be taking you home (if they are not intending to stay in the department to wait for you).

You will have the opportunity to change into a hospital gown and we can also give you paper shorts, which keep you well covered during the procedure to help keep your dignity. You may want to bring a pair of full-backed slippers with you.

If you are receiving an enema for your flexible sigmoidoscopy, this will be administered about half an hour before your procedure. There will be a toilet available when you need to pass a motion.

You will meet your endoscopist before you go through to the Endoscopy Room. If you have already signed your consent form, they will be happy to answer any questions you may have and confirm the consent.

If you have opted to receive sedation, a plastic tube known as a cannula (sometimes called a Venflon® or drip), will be inserted into a vein in your hand or arm. This allows the sedative drugs to be injected.

5. What happens during the test?

Will I be awake or feel any pain?

Flexible sigmoidoscopy is usually a short test, and most people do not need to have sedation. If you are particularly anxious about the test, **intravenous sedation** may be helpful. Alternatively, we can give you **Entonox gas** during the procedure, which will help to ease any pain or discomfort and has a calming effect.

You will be able to decide which of these options is best for you when you attend for your flexible sigmoidoscopy.

About intravenous sedation

Sedative drugs can be given into a vein in your arm, which will make you drowsy and relaxed. These drugs will NOT make you go to sleep like a general anaesthetic. You will be able to hear what is said to you and you will be able to follow simple instructions during the investigation. Sometimes the drugs affect your memory, and you may not remember anything about the test afterwards.

You will be connected to a pulse oximeter by a finger probe, which measures your oxygen levels and heart rate during the procedure. Your blood pressure may also be recorded.

If you choose to receive sedation, you must arrange for a friend or relative to collect you from the Endoscopy Unit, and we recommend that they stay with you afterwards. You must not drive, ride a bike, operate machinery, climb ladders or sign important documents for 24 hours following sedation. If you are not able to make these arrangements, we will not be able to give you sedation.

About Entonox

Entonox is a colourless gas which does not smell. The gas is a mixture of oxygen and nitrous oxide. It is sometimes called laughing gas or “gas and air”. It is the same gas used by pregnant women during labour. It can help during flexible sigmoidoscopy because it relieves pain and has a calming effect.

The gas is given by a special mouthpiece, which you will be asked to hold during the test. You will be able to breathe normally through the mouthpiece. The gas begins to work within 30 seconds, and you may feel slightly lightheaded and sleepy. You can control the amount of gas that you receive yourself by simply removing the mouthpiece. Your nurse will monitor you closely throughout the procedure.

One of the benefits of Entonox is that once your test is over, the gas quickly leaves the body, and it is usually safe to go home soon after the test. **Unlike with intravenous sedation, you are permitted to drive just 30 minutes after the test, as long as you feel back to your normal self.**

Entonox is very safe for most people. It can make you feel sick, dizzy and give you a dry mouth. These side effects wear off soon after you stop using the gas. Entonox may not be suitable for you if you have breathing conditions such as COPD, severe bullous emphysema or a collapsed lung.

What happens in the procedure room?

You will be shown into the Endoscopy Room where the other nurses helping the endoscopist will introduce themselves to you. You will have the opportunity to ask any questions.

The nurse looking after you will then ask you to lie on your left side, ready for the test.

If you are going to have sedation, the nurse will place some tubes under your nose which will provide you with oxygen. We use a special probe on your finger to monitor the oxygen levels during the test. The sedation drugs will be administered into a cannula in your vein, and you will quickly become sleepy and relaxed before the procedure starts.

What happens during the test?

The endoscope is gently put into your back passage and slowly pushed around the left side of your large bowel. As the endoscope is pushed past bends in your bowel, you may feel uncomfortable for a short period of time.

Air is blown into the bowel during the test to help the endoscopist do the test. You may be asked to change position during the test to help pass the endoscope around your bowel. The nurses will help you move.

We will ensure that you are well covered up throughout the procedure to preserve your modesty.

Once the endoscope has been passed around the left side of your bowel, the endoscopist will slowly withdraw it to look for anything unusual. Some of the air blown into the bowel will be removed as well, which will make you feel more comfortable.

During the test, samples (biopsies) may be taken from the lining of your bowel for analysis in our laboratory. These will be kept for future tests if they are needed.

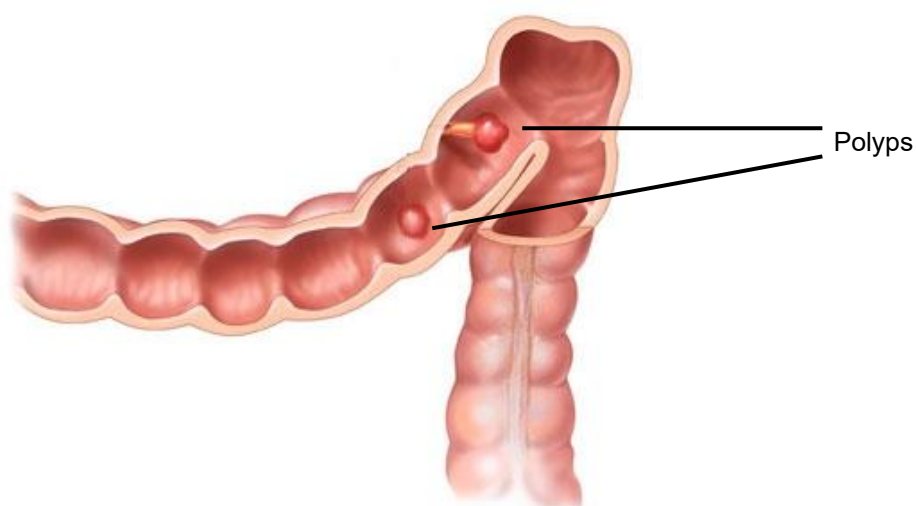
What are polyps and what is a polypectomy?

A polyp is a small growth which looks like a wart. They can grow on the lining of the bowel. Most polyps are harmless, but if they are left to grow, some types of polyps can develop into a cancer. By removing the polyps, your risk of developing bowel cancer is greatly reduced. Most polyps do not cause any symptoms but in some cases, they can cause bleeding or a change in bowel habit.

Anyone can get polyps, but certain people are more likely to get them than others. You may have a greater chance of having polyps if:

- you are 50 years of age or older
- you have had polyps before
- someone in your family has had polyps or bowel cancer
- you are a smoker, are overweight or have a poor diet.

Some polyps are attached to the bowel wall by a stalk, and look like a mushroom, whereas others are flat without a stalk. Flat polyps are generally a little more difficult to remove. The removal of a polyp is called a polypectomy and can be achieved by using a variety of instruments through channels in the endoscope.



For most polyps, a snare (wire lasso) is placed around the polyp base and tightened whilst an electric current is passed. This cuts through the polyp and destroys any blood vessels to prevent bleeding. Flat or very large polyps can be removed by a technique called EMR (Endoscopic Mucosal Resection). This involves injecting liquid into the lining of the bowel underneath the polyp. This raises a cushion of fluid under the polyp, lifting it off the lining of the bowel, and allows the wire loop snare to remove the polyp safely. For some very small polyps, special forceps (graspers) can be used to hold the polyp whilst electric current is applied, destroying the tissue. The endoscopist will try to retrieve the polyp tissue once it has been removed, so that it can be analysed under the microscope in the pathology lab.

If a polyp is found on the left side of your bowel, there is a higher chance of you having polyps on the right side of your bowel. As a flexible sigmoidoscopy does not reach the right side of your bowel, you may be asked to return on another day for a full colonoscopy if a polyp is found. A colonoscopy allows the whole of your large bowel to be examined, and any further polyps to be removed.

6. What happens after the test?

A nurse will take you to the recovery area, where you can rest for as long as you need.

If you received a sedative drug, your oxygen levels, blood pressure and heart rate will be recorded. It usually takes about 30 minutes for the initial effects of sedation to wear off, but some people may feel fully alert immediately after the test. The drugs will remain in your blood system for about 24 hours, and you may still feel sleepy or forgetful from time to time. You will need someone to escort you home and supervise you for this 24-hour period.

Will I be told the results straight away?

Before you leave the department, the nurse or doctor will explain the results of your test. If you need any treatment or further tests, these will be explained to you. If biopsies were

taken, they will need to be sent to the pathology lab for further analysis. It may take 6 – 8 weeks for these results to be available.

You may wish to have a family member or friend with you when you are given the results.

7. What are the risks and side effects to this test?

There are some risks with having this test. Your doctor will have felt that the benefits of this test outweigh the potential risks before they suggested that you should have it.

Feeling bloated

You may feel bloated (full of wind) and have tummy ache for a few hours after the test, because air is blown into the bowel. You will find this goes away as you pass wind.

Breathing and blood pressure

If you have sedative drugs, they can cause your breathing to slow down or lower your blood pressure. This is the reason we do not give high doses of the drugs for this test. We monitor your breathing and oxygen levels carefully throughout the procedure and this rarely becomes a problem. We can give a drug (antidote) to reverse the effects of the sedative straight away if needed.

Perforation (tear in the bowel wall)

There is a risk that the endoscope can tear (perforate) the bowel wall. The risk of this is less than 1 for every 5,000 tests done. A perforation can sometimes settle with intravenous antibiotics and resting your bowel, but an operation is usually required to repair the damage. If an operation is needed, you may require a stoma (a stoma is an opening into the bowel which empties into a bag on the abdomen) but this is usually temporary.

The risk of perforation is higher if polyps are removed. The level of risk depends on the size and location of the polyp but can be 1 to 2%. If removal of the polyp would be a higher risk procedure, the colonoscopist may decide to simply take samples from it and ask you to return to have the polyp removed at a later date. This will allow you the opportunity to discuss the risks in more detail first.

Bleeding

Bleeding may occur at the site of biopsy or polypectomy. This usually occurs during the procedure itself but may occur up to 14 days later. The risk of this is approximately 1 for every 200 to 400 tests done. Usually the bleeding is minor, and it stops on its own. Rarely, the bleeding can be more severe and may require a blood transfusion. Very rarely, a further flexible sigmoidoscopy or even surgery may become necessary to stop the bleeding.

Missed abnormalities

If the bowel preparation drugs have not worked very well and there is still stool in your bowel, it can hide abnormalities which can be missed. Sometimes, polyps and even cancers can be difficult to see during the test.

If you are worried about any of these risks, please speak to your doctor or a member of the team before you are due to have this treatment.

8. Are there any alternatives to this procedure?

X-ray tests (a barium enema) and CT scans (a CT virtual colonoscopy) are alternative ways of looking at your large bowel. The main drawback of these tests is that they only provide pictures of the shape of your bowel, and do not allow samples to be taken or polyps to be removed. They will also expose you to high levels of radiation. You may need similar medicines to clear your bowel for these tests. Your doctor will have considered a barium enema or CT virtual colonoscopy for you before asking you to have a flexible sigmoidoscopy.

If you do have questions about these alternatives, please mention them to your doctor.

Comments, Compliments or Complaints

The Patient Relations/Patient Advice and Liaison Service (PALS) Department provides confidential on the spot advice, information and support to patients, relatives, friends, and carers.

Contact Us

Tel: 01942 822376 (Monday to Friday 9am until 4pm)

The Patient Relations/PALS Manager
Wrightington, Wigan and Leigh Teaching Hospitals NHS Foundation Trust
Royal Albert Edward Infirmary
Wigan Lane
Wigan
WN1 2NN

Ask 3 Questions

Become more involved in decisions about your healthcare. You may be asked to make choices about your treatment. To begin with, try to make sure you get the answers to three key questions:

1. What are my options?
2. What are the positives and negatives of each option for me?
3. How do I get support to help me make a decision that is right for me?



How We Use Your Information

For details on how we collect, use, and store the information we hold about you, please see patient information leaflet, Ref. **Corp 006** How we use your information, this can be found on the Patient Information Leaflets page on the Trust website, see details on the front cover.

This leaflet is also available in audio, large print, Braille, and other languages upon request. For more information, please ask in the department/ward.

© Wrightington, Wigan and Leigh Teaching Hospitals NHS Foundation Trust.
All rights reserved. Not to be reproduced in whole or in part without the permission of the copyright owner.

Call 111 first when it's less urgent than 999.



EMPLOYER RECOGNITION SCHEME

GOLD AWARD 2021

Proudly serving those who serve.

Phone: 0808 802 1212
Text: 81212
www.veteransgateway.org.uk

