



Acting fast if you see signs of premature labour can help you and your baby get the best care. Call maternity triage now (number below). Let the midwife know your symptoms. They might ask questions to see if you or your baby need any checks. The midwife will suggest what to do next. If you cannot talk on the phone, you can go to maternity triage in person.

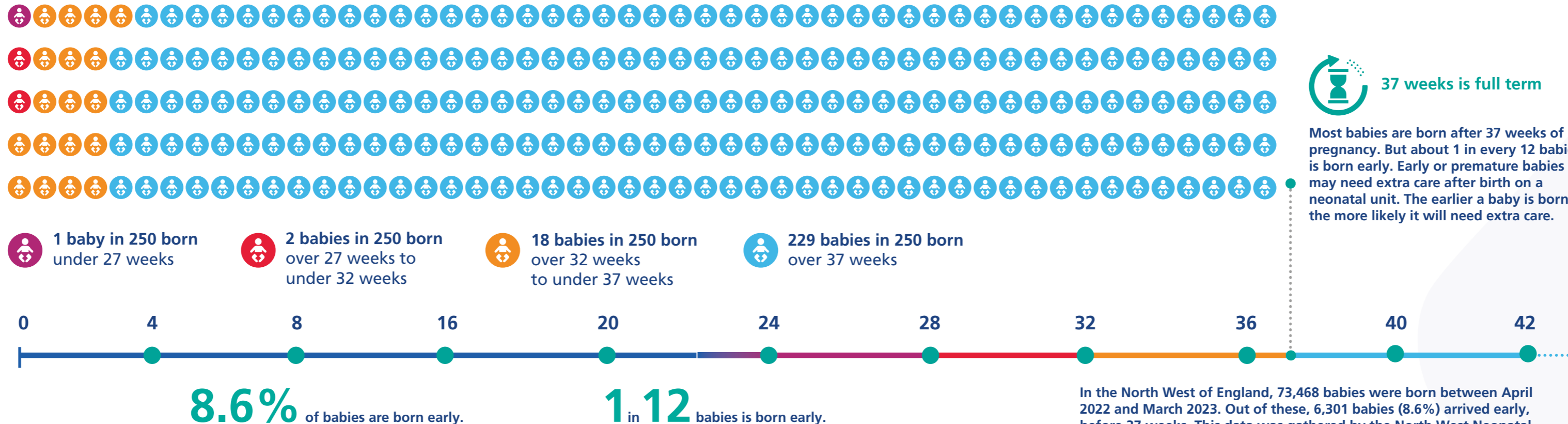


Phone



With thanks to the Women's CHAI Project for their advice and support on this project

When are babies born?



In the North West of England, 73,468 babies were born between April 2022 and March 2023. Out of these, 6,301 babies (8.6%) arrived early, before 37 weeks. This data was gathered by the North West Neonatal Operational Delivery Network.



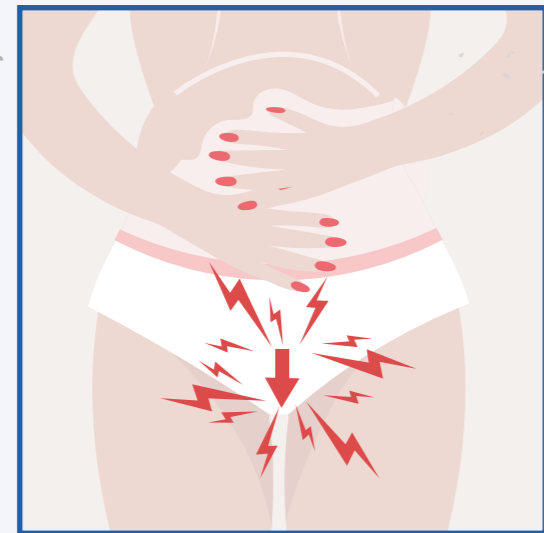
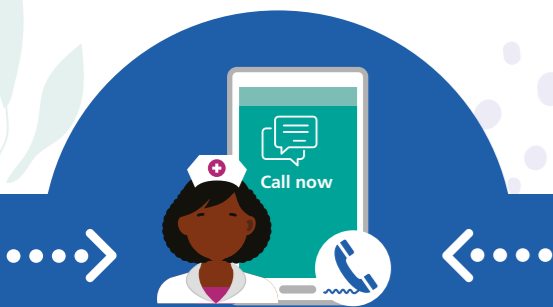
IS IT OK FOR ME AND MY BABY?



Signs your baby may come early



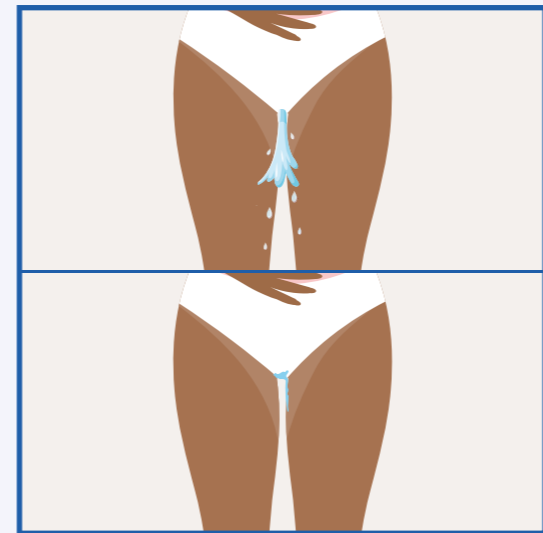
Pain or stomach hardens (tightenings)



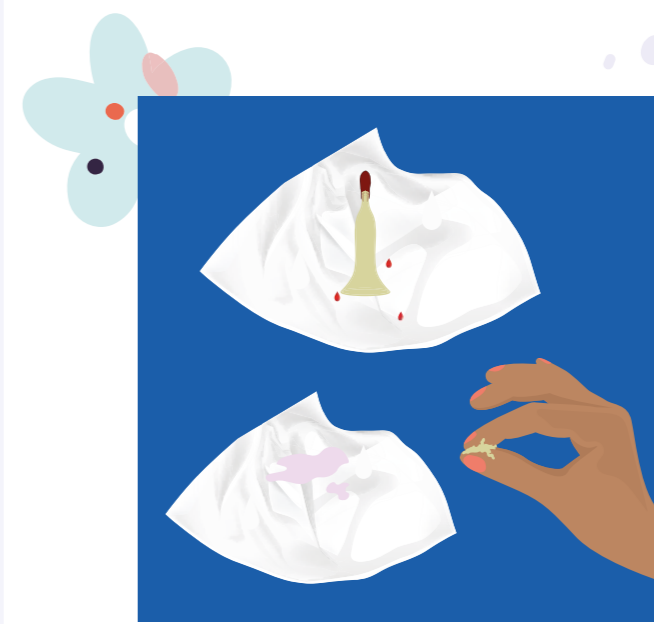
Pain or pressure down below



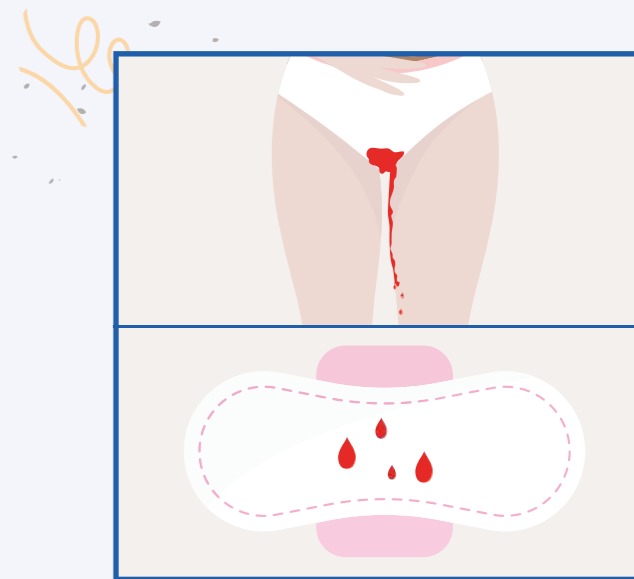
Backache



A gush or trickle of fluid down below



Sticky or creamy fluid down below



Bleeding or spotting down below

