

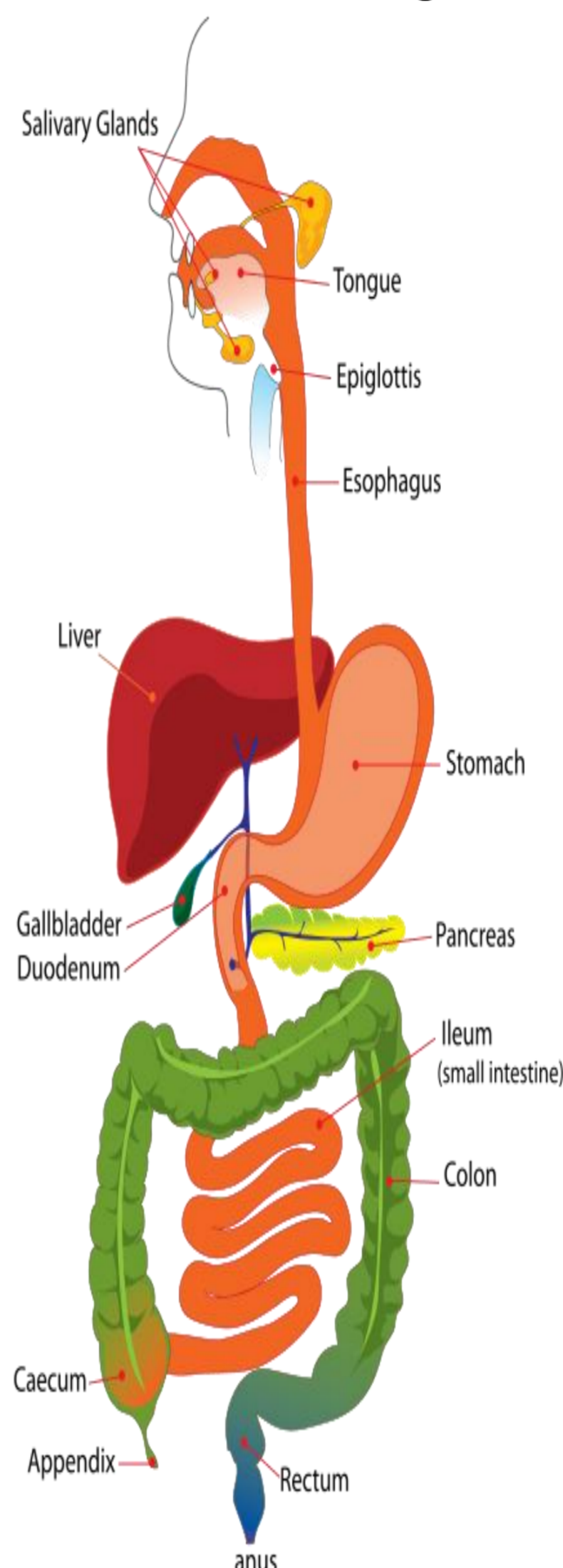
# Gastroenterology

**“Excellent site to come to for Monitoring Visits – Medpace”**

## Background & Services

The Gastroenterology team is made up of six Consultants, supported by specialist nurses who deliver nurse-led clinics and care, as well as support to patients with all types of gastroenterology disease. There are also staff grade doctors within the team. Together they provide a comprehensive gastroenterology service.

- Hepatitis C Specialist Service
- IBD Specialist Service
- Colonic Stent
- Flexible Sigmoidoscopy
- Colonoscopy
- Gastroscopy
- Endoscopic Mucosal Resection (EMR)
- Endoluminal Ultrasound (EUS)
- Oesophageal Balloon Dilation
- Percutaneous Endoscopic Gastrostomy (PEG)
- Ultrasound Guided Liver Biopsy
- Endoscopic Retrograde Cholangio-Pancreatogram (ERCP)
- Oesophageal Banding
- Oesophageal Balloon Dilation
- Percutaneous Endoscopic Gastronomy



## Awards & Achievements

- First UK site to recruit to Inflammatory Bowel Disease study
- Met time to target by recruiting first patient to study in 24 days
- Dr Ang North West regional lead for the largest chemoprevention trial of Barrett’s adenocarcinoma
- Only site in region to have an active database in Barrett’s Adenocarcinoma



Dr Richard Keld Consultant Gastroenterologist

## Local Facts

The purpose built Leigh Endoscopy Unit is designed to provide a patient-centred experience which maintains the highest standards for comfort, safety and quality while safeguarding our patients privacy and dignity.

The new unit significantly expands endoscope services up to 200 therapeutic and diagnostic sessions every week and significantly reduces waiting times for gastroscopy, colonoscopy and flexible sigmoidoscopy.

WWL saw in excess of 11,000 cases in 2016:

Provide specialist nurse led clinics in:  
**IBD**  
**Hepatic Biliary Service (HPD)**  
**Hep C**  
**Upper/ Lower GI**  
**Colorectal**  
**Bowel Scope service at Hanover Unit**

## Research Interest

- Barrett’s Adenocarcinoma Database
- Inflammatory Bowel Disease
- Ulcerative Colitis
- Liver Cirrhosis
- Crohn’s Disease
- Hepatitis C
- Bowel Cleaning
- Clostridium Difficile Infection



For more information contact 01257 488 264  
 Email: [researchadmin@wwl.nhs.uk](mailto:researchadmin@wwl.nhs.uk)