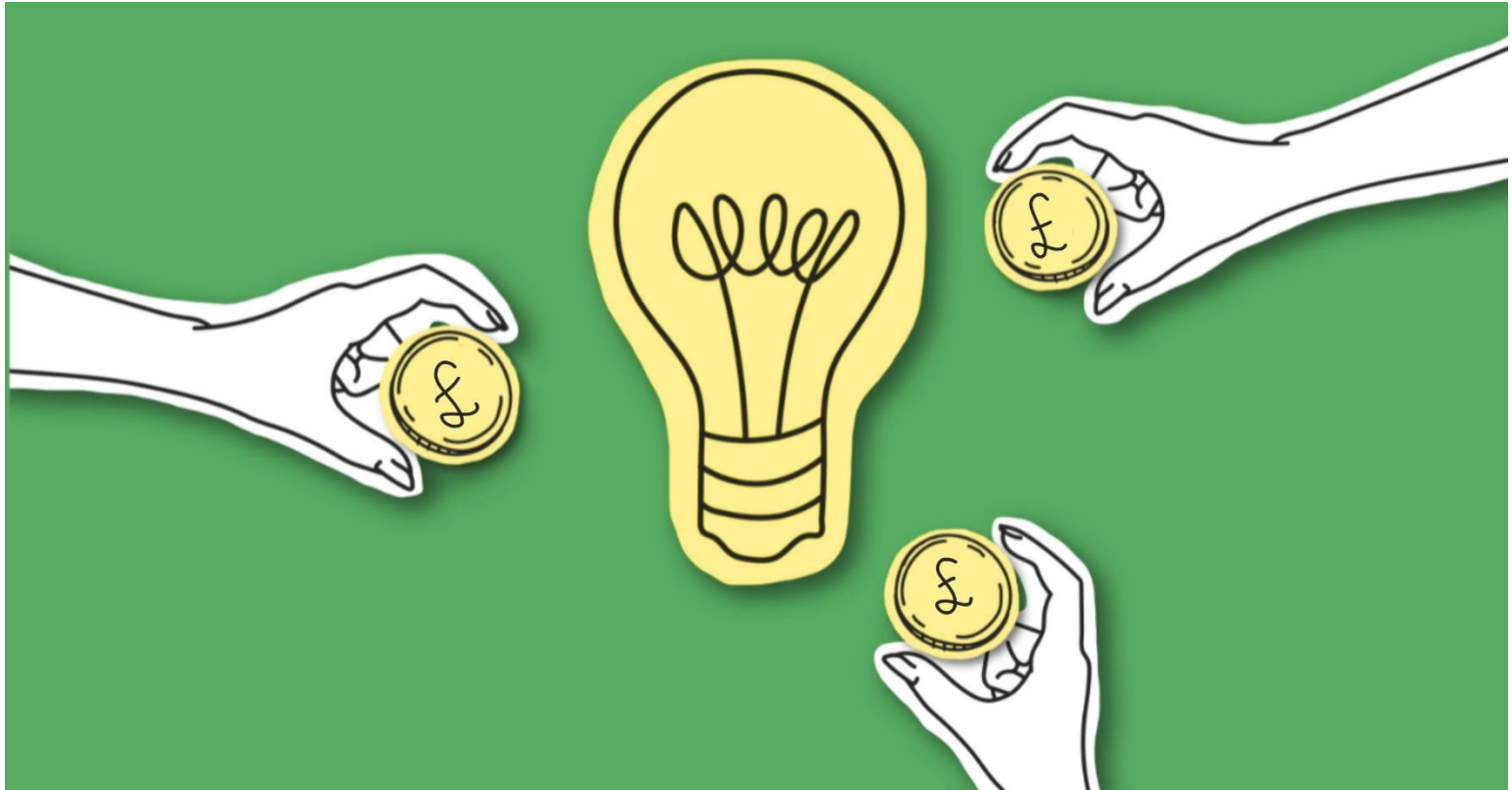


# Research Funding Opportunities

---



Helen Spickett, October 2024

# Opportunities to fund...

---

**Career development**



**Research projects**



# Career Development

---

## The NIHR Academy

The NIHR Academy provides training and support to health and care researchers at all stages of their careers. It fosters a skilled and innovative research workforce dedicated to improving healthcare outcomes.

### **Fund and support:**

- personal career development funding awards
- institutional career development funding awards
- training within NIHR infrastructure or capacity building structures

# Postdoctoral opportunities

**Postdoctoral Fellowships** offer 3 Postdoctoral Fellowships to support your career development after you have completed a PhD.

- Advanced Fellowship (AF)
- Advanced Clinical and Practitioner Academic Fellowship (ACAF)
- Advanced Local Authority Fellowship (ALAF)

**Clinical Lectureship** provides a clinical and academic training environment for doctors and dentists

- IAT Clinical Lectureships in Medicine
- NIHR Clinical Lectureships in Dentistry

**Development and skills Enhancement (DSE) Award** a postdoctoral level funding opportunity aimed at supporting early to mid-career researchers in gaining specific skills and experience to underpin the next phase of their research career.

**Senior Clinical and Practitioner Research Award (SCPRA)** provides up to 5 years of funding for individuals at the post-doctoral level to engage in research activities.

**Undergraduate Internship Programme (UIP)** aims to engage and attract students from underrepresented professions in the early stages of their academic studies to consider a career in health and social care research.

<https://www.nihr.ac.uk/career-development/research-career-funding-programmes/postdoctoral>

# Professorships and Senior Investigators

**Research Professorship** a 5-year award, with up to 5 awards per year. It enables outstanding academics to work at a professorial level on health and care research.

**Global Health Research Professorship** fund research that aims to specifically and primarily benefit people in Low Middle-Income Countries (LMICs) eligible for Official Development Assistance (ODA).

**Senior Investigators Award** for prestigious researchers who make an outstanding leadership contributions to the work of the NIHR. They receive funding for 4 years to support their research activities while undertaking a senior leadership role for the NIHR.

<https://www.nihr.ac.uk/career-development/research-career-funding-programmes/professorships-and-senior-investigators>

## Nurses and midwives

We support nurses and midwives to improve lives through research.



## Clinical Research Practitioners

## Social care practitioners



## Public health research

We support you to improve the health of local communities and reduce health inequalities through public health research.

# Where to begin

---



**NHS R&D NW** focuses on the development of early career practitioners in the health and care arena. This is done through several targeted programmes and activities funded through NHSE and NIHR including the Integrated Clinical Academic (ICA) programme

- **HEE Internship** Nurse, Midwife, Allied Health Professional, Pharmacist or Healthcare Scientist, looking to embark on a clinical academic career
- **Early Career Researcher (ECR) Development Pathway** 12-month programme designed for health and social care professionals in the North West Coast and Greater Manchester regions
- **Social Care Practitioner Development Programme** Practitioner Researcher Programme for adults and children's social care across the North West region of England.
- **HEE Bridging Scheme** available to those interested in pursuing a PhD or post-doctoral level fellowship

<https://research.northwest.nhs.uk/>

# NIHR Local Authority Short Placement Award for Research Collaboration (LA SPARC) Scheme

## LA SPARC

- Individuals based in a local authority setting who would like to undertake a **short placement** in a part of the NIHR/academia. This may appeal to those who are interested in enhancing their careers, in **experiencing research** from a different perspective or taking the next step in **developing a practice academic career**.
- NIHR Academy members to undertake a **short placement in a LA/provider** of LA commissioned service setting. For individuals who want to **work alongside service commissioners and providers** to hear the issues and challenges being faced at the local level, to **co-create research** that is better connected with practice, as well as **developing partnerships** and joint ways of working.
- up to £15,000 to undertake a bespoke short placement

<https://www.nihr.ac.uk/funding/nihr-local-authority-short-placement-award-research-collaboration-la-sparc-scheme-round-4/36307>



# NIHR Research Career Funding Programmes

---

## Integrated Clinical Academic (ICA) programme

- **Predoctoral Fellowship (PF)** - for methodologists working in health and care
- **Predoctoral Clinical and Practitioner Academic Fellowship (PCAF)** - for early-career researchers (excluding doctors and dentists)
- **Predoctoral Local Authority Fellowship (PLAF)** - for people working in English local authorities and their partners who want to develop as a health and care researcher
- **In-Practice Fellowship (IPF)** - for health and care professionals working in primary care

<https://www.nihr.ac.uk/career-development/research-career-funding-programmes>

# Research Projects

---



# Research Projects

---

The NIHR offer funding through different funding programmes. programmes are open to applications of any rigorous study design including:

- evidence syntheses
- pilot and feasibility studies
- randomised controlled trials
- quantitative research
- qualitative research

Applications are accepted from:

- individual researchers
- academic institutions
- local authorities
- industry
- charities
- social care organisations

# Funding opportunities

---

**Public Health Research Programme** – future topics for future commissioned research:

- Unstructured physical activity for children
- Interventions to reduce violence
- Citizens Advice
- Children and young people's mental health
- Health impacts of messages in the media
- Community wealth (assets) building
- Coastal communities

<https://www.nihr.ac.uk/funding/public-health-research-programme-future-topics/97014>

# Funding opportunities

---

**Research Programme for Social Care (SC)**— evidence to improve, expand and strengthen the way SC is provided for users of care services, carers, the SC workforce, and the public:

- Studies of SC needs, circumstances and relevant outcomes related to adults, children or young people including inequalities.
- Evaluating existing or new SC services (effectiveness, cost-effectiveness and distributional consequences)
- Effectiveness and cost-effectiveness evaluations of interventions
- Developing and testing new assessments, interventions or services
- Research methods development
- Feasibility, pilot and definitive trials
- Examining consequences for SC users of provision of other services
- Policy-implementation research
- Studies that involve secondary data analysis or record linkage

And more, see: <https://www.nihr.ac.uk/funding/research-programme-social-care-competition-3/97015>

# Funding opportunities

---

## Health Technology Assessment (HTA) Programme

**Commissioning brief - Increasing social support and parenting skills for parents with learning disabilities.** The commissioned workstream invites applications in response to calls for research on specific questions which have been identified and prioritised for their importance to the NHS, patients and social care:

### Research question

- What is the effectiveness and cost-effectiveness of interventions to increase social support and parenting skills for parents with learning disabilities?

<https://www.nihr.ac.uk/2472-increasing-social-support-and-parenting-skills-parents-learning-disabilities-commissioning>

# Funding opportunities

---

## **Public Health Research (PHR) Programme Commissioning brief - Ultra-processed foods**

The PHR Programme is predominantly interested in the evaluation of interventions operating at population/group level, rather than at an individual level, and which should address health inequalities and the wider determinants of health.

### **Research question**

What are the health and health inequality impacts of interventions that affect consumption of ultra-processed foods?

Research areas of interest could include:

- Evaluation of existing interventions adapted for UPF consumption
- Evaluation of interventions that impact inequality aspects of UPF consumption
- The health and health inequality impacts of current public health messaging

And many more, see: <https://www.nihr.ac.uk/2478-ultra-processed-foods>

# Commercial Income

---

- Commercial Trials offer another source of income to NHS trusts involved in research.
- Trials are costed using a national template to ensure transparency
- Offers income and opportunities for re-investment into research infrastructure
- Available to health and care providers IF involved in delivery of commercial research
- Partnering with an NHS Trust is an option e.g. GP acting as a Principal Investigator but working with the WWL Research Delivery Team through the Clinical Research Hub, Ashton-in-Makerfield.

Commercial

Industry

Pharma

Life Science



