

## NIHR Applied Research Collaboration Greater Manchester (ARC-GM)



# OUR APPROACH



**We are led by Greater Manchester health and care priorities...** working with health and care partners to address their priorities

**We co-produce...** applied health and care research projects with stakeholders and the people of Greater Manchester



**We collaborate...** with other ARCs, universities, health and care organisations, industry, the public and communities of Greater Manchester and the voluntary, charity and social enterprise sector

**We have expertise...** in applied health and care research methods and approaches



# Research Themes

---



Digital Health



Economic Sustainability



Healthy Ageing



Mental Health



Organising Care

## Cross Cutting Themes

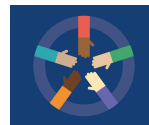
---



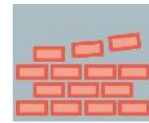
Evaluation



Implementation Science



Public and Community  
Involvement and Engagement  
(PCIE)



Capacity Building



Our mission is to foster a vibrant and inclusive research culture that produces timely, needs-driven, and transformative health and social care research for the benefit of communities locally and nationally.



#### Strategic Aim 1:

Strengthen communities and reduce health inequalities



#### Strategic Aim 2:

Drive prevention and early intervention



#### Strategic Aim 3:

Contribute to economic growth



#### Strategic Aim 4:

Support the delivery and economic sustainability of care



#### THEME: STRENGTHENING COMMUNITIES

- Health inequalities
- Community resilience
- Place-based care
- Community assets
- Engaging marginalised groups
- Physical and mental health
- Social care
- Children, young people and families
- Healthy ageing

#### THEME: PREVENTION AND EARLY INTERVENTION

- Health inequalities
- Early detection including primary care and screening
- Behavioural science
- Engaging marginalised groups
- Secondary prevention
- Multiple long-term conditions

#### THEME: WORK, HEALTH AND PRODUCTIVITY

- Health inequalities
- Health-related drivers of economic inactivity
- Interventions to get people back to work and stay in work
- Employment-based interventions
- Women's health
- The links between health and economic growth

#### THEME: CARE DELIVERY AND ECONOMIC SUSTAINABILITY

- Care inequalities
- Efficiency and integration
- Resources and needs
- Digital care
- Incentives and financing
- Care workforce

#### THEME: EVIDENCE GENERATION & SYNTHESIS

Health inequalities; rapid approaches; co-produced, mixed method, real-world evaluations; use of administrative data

#### THEME: IMPLEMENTATION AND KNOWLEDGE MOBILISATION

Health inequalities; accelerating the impact of proven innovation; enhancing delivery of care and services; de-implementation; innovation pipeline.

## ARC-GM Enabling Strategies

Partnerships and Knowledge Mobilisation

Research Capacity Development

Public, Involvement and Engagement

Research Inclusion

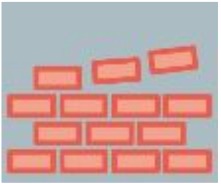
## Partnerships and Knowledge Mobilisation

### Partnerships

- Co-production of research with the end users
- Doing research that meets the needs of those that it is for and about
- Doing research with those who have the greatest burden of disease Leveraging research income

### Knowledge Mobilisation

- Increasing the ability of end-users of research knowledge to identify reliable research evidence and use it
- Increasing the ability of producers of research knowledge to better understand the needs of the end-users and produce research that is relevant, timely and actionable;
- The need to develop productive, effective communication and relationships between end-users and producers, such that the communities are symbiotic and self-sustaining.



# Research Capacity Development

PhD and Post doc fellowships (stipend and fees)

Pre-doctoral fellowships – 50% backfill

Internships -30days of 6-9mths

Bespoke workshops e.g., Rapid Evidence Synthesis;  
Rapid evaluation; Implementation Frameworks

Social Care

Research Champion Roles/ Internships/  
Pre-doc fellowships

Dementia Internships

Knowledge Mobilisation Champions



## Public and Community Involvement and Engagement



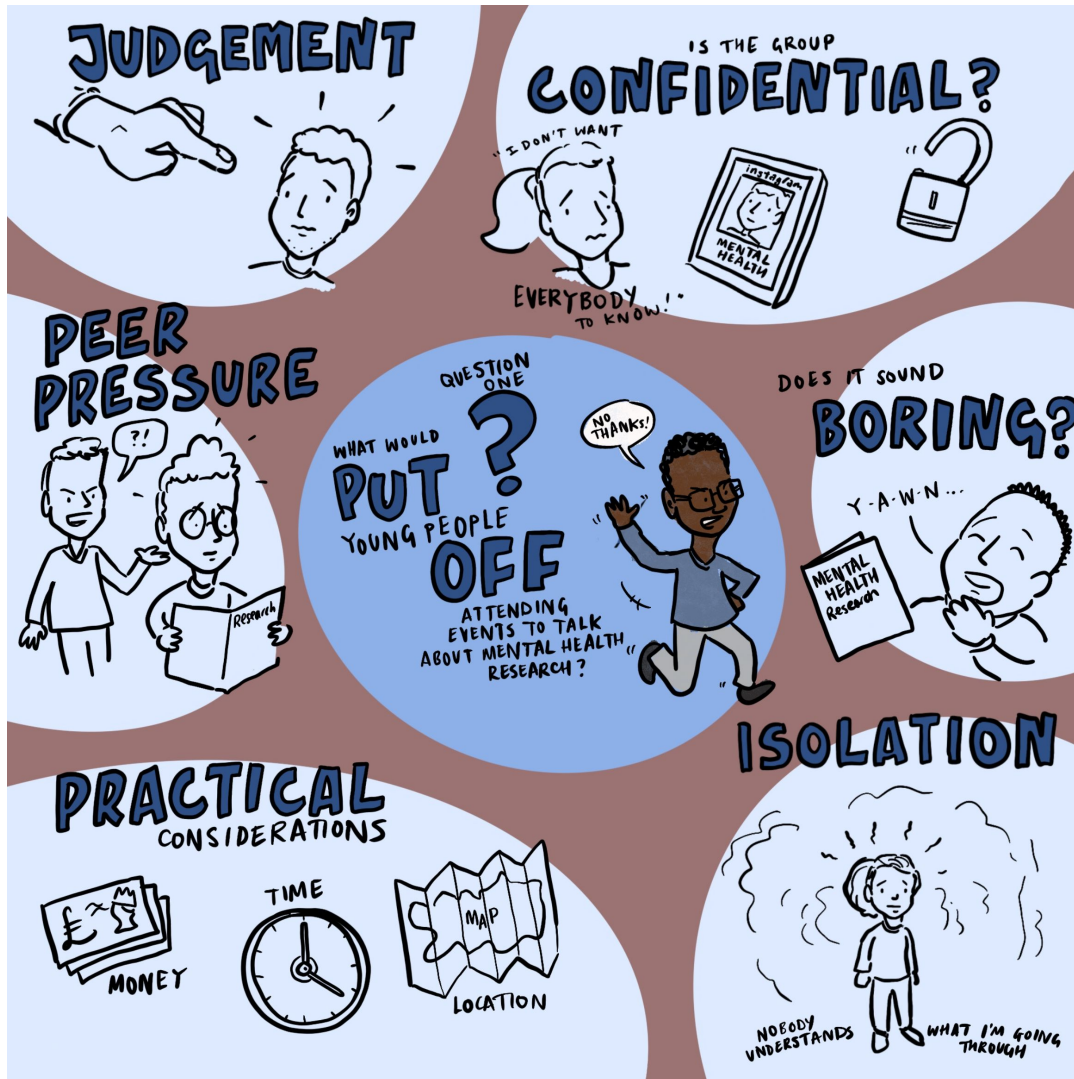
Public Panel and Young Person's Advisory Group

GM Public Involvement and Engagement Forum  
(PCIE Lead and VCSE organisations)

Research Engagement Network Development Programme  
VCSE / Research Infrastructure

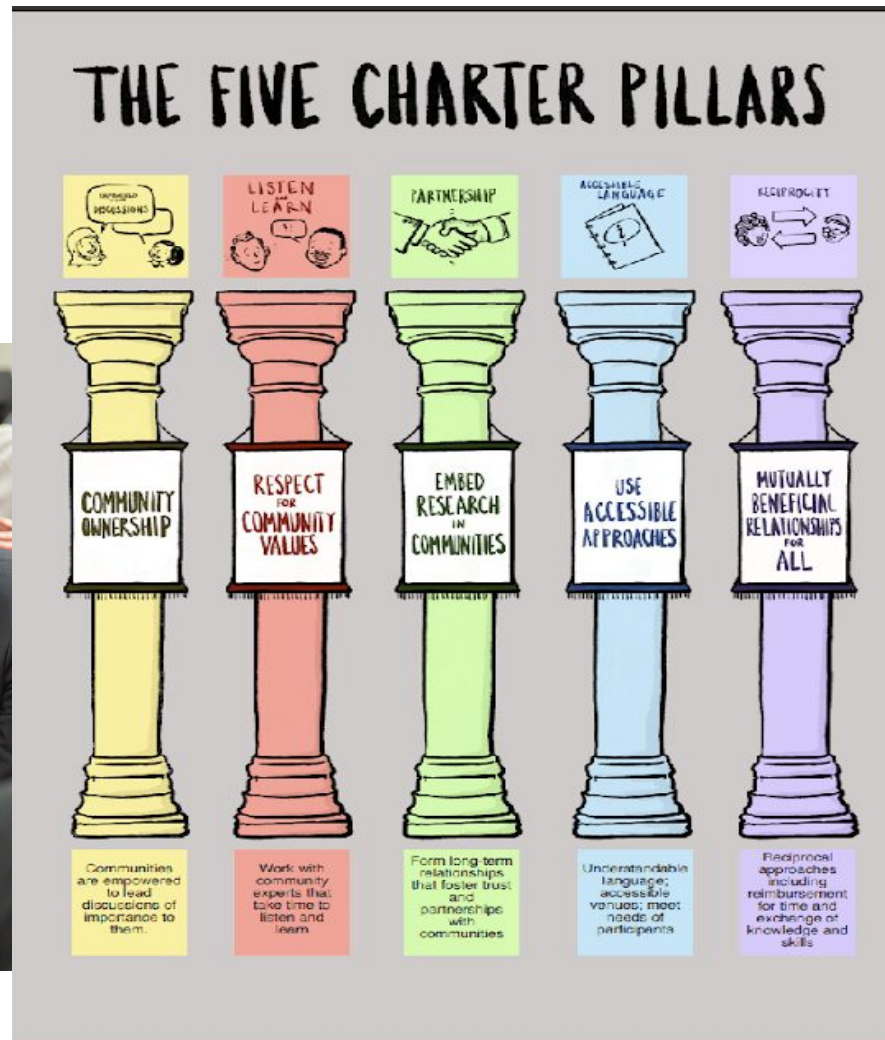


# Our fabulous Young People's Advisory Group #My Voice Matters





# The Greater Manchester Research Engagement Network



# THE GREATER MANCHESTER RESPECTFUL RESEARCH CHARTER

Strong, equitable, and respectful partnerships between researchers, the VCFSE sector, and Greater Manchester communities will empower those facing the greatest health challenges to actively participate in and shape research, ultimately leading to fairer health and care for all.

## COMMUNITY LEADERSHIP

EMPOWERED DISCUSSIONS



## RESPECT FOR COMMUNITY VALUES

LISTEN  
LEARN



## EMBED RESEARCH IN COMMUNITIES



## USE ACCESSIBLE APPROACHES



## MUTUALLY BENEFICIAL RELATIONSHIPS FOR ALL



Communities with common shared interests and values supported by Voluntary, Community, Faith and Social Enterprise (VCFSE) groups and community leaders are taking charge of their own health and wellbeing. Researchers should recognise and value community led approaches and work to create mutually beneficial partnerships.

## 1. Community leadership

Meaningful research that matters most to people it is about and for

## 2. Respect for community values

Communities know their neighbourhoods. Listen & Learn first to understand people and their needs.

## 3. Embed research in communities

Develop long-term relationships between researchers & communities, fostering trust & collaboration for future projects

## 4. Accessible approaches

Community involvement opportunities should be accessible to all & reach people & groups according to research

## 5. Mutually beneficial relationships for all

Working together in a way that rewards & values contributions building sustainable, mutually respectful & productive relationships.

[sue.wood@healthinnovationmanchester.com](mailto:sue.wood@healthinnovationmanchester.com)