



Wrightington, Wigan and Leigh Teaching Hospitals  
NHS Foundation Trust

THE MAGAZINE FOR MEMBERS

Spring 2023



## Inside

Page 2

Update From Our Lead Governor

Page 6

Innovative Project to Help Patients Living with Dementia

Page 7

Guaranteed Interview Scheme For Veterans

Page 9

New Health and Wellbeing Centre in Aspull Opens its Doors

Photograph of Martin Shiels with twins Xander and Solomon after donating to WWL's Neonatal Intensive Care Unit

# Welcome From Our Chair, Mark Jones



Mark Jones, WWL Chair

Welcome to the latest Members' Magazine where we will update you on the developments and achievements at Wrightington, Wigan and Leigh Teaching Hospitals NHS Foundation Trust (WWL) since our last edition.

In this issue of the Members' Magazine, our Armed Forces Healthcare Lead, Leanne Cobham, discusses her role and the ways in which it helps WWL support veterans of our Armed Forces. From achieving 'Gold' Veteran Aware status to setting up the Guaranteed Interview Scheme for our Armed Forces community, Leanne has transformed the way in which we provide care and opportunities for them, and their families and she is a valuable asset to our WWL Family.

Over in the community, it was my honour to be present at the official opening of our brand-new Research Hub in Ashton-in-Makerfield. The state-of-the-art facility really is a jewel in the WWL crown and helps us to achieve a key objective within the first year of our recently published five-year research strategy, 'Research for All'. More importantly, it will improve visibility of WWL's research in a community setting, being centrally located and covering a wider area across the Wigan Borough.

Since the last edition of the Members Magazine, I have also had further engagements in the

community, attending meetings with the Wigan Borough Engagement Group, the Patient Experience and Engagement Group and Think Ahead, an organisation who provides information and recovery support for members of the public who have had a stroke. The intention is to share the feedback I receive from these organisations with the Council of Governors.

Another shining example of WWL leading the way and achieving recognition is our Virtual Hub programme which earlier this year celebrated its first anniversary. Since we welcomed our first patient onto the pioneering new project in January 2022, the team has treated more than 1,500 patients and saved almost 6,000 hospital bed days. A truly innovative and ground-breaking service that really is the future of health care.

On pages 17 and 18 you can read more about the new faces joining our Council of Governors. It is always invigorating to recruit fresh ideas and thoughts within our Governors, but this is matched with the sadness we feel in saying goodbye to some of our long-standing team members who have served the Trust for a great number of years. I would like to say thank you to Bill Anderton, Linda Sykes and Pauline Gregory for their counsel and their unmatched dedication to the Trust throughout their tenure.

It would be remiss of me to not mention the periods of industrial action against the Government over the past few months. During strikes from our Royal College of Nursing and British Medical Association colleagues, I met with staff on the picket lines, on wards, in the Emergency Department, Urgent Emergency Care and at our Wrightington site, and I heard how difficult it was for everybody involved. However, I was also pleased to hear that their wellbeing was supported by their managers and that they were made aware of the professional support services available to them. Along with the rest of the Board of Directors, I want to extend our thanks to our patients, their loved ones, and the wider community for their understanding during these times and also to say a heartfelt thank you to all our staff, in every role, night and day.

Following a difficult winter, in which we have witnessed immense pressure and challenges on our services, green shoots are beginning to show, not least with the new developments we are seeing across our sites. Work continues over at Leigh Infirmary on the building of an additional theatre and Community Diagnostic Centre which will provide improvements to diagnostics for patients and will support joined-up care between secondary, community and primary care services. Likewise, the highly-anticipated Aspull Health

and Wellbeing Centre is now open and services are being delivered through WWL's partnership with OneMedical Property, Aspull Surgery, NHS Greater Manchester Integrated Care Board and Wigan Council.

As always, I would like to thank every member of our WWL Family for their hard work and dedication and to you, our Members, for your continued support to WWL. I hope you enjoy this latest edition of the Members' Magazine.

## Update From Our Lead Governor



Andrew Haworth  
Lead Governor

Winter is usually the most challenging time for an Acute and Community Hospital Trust like WWL, as health issues peak with colder, damper weather hitting the vulnerable, filling every bed and stretching our teams. Summer potentially brings healthier

times, reduced pressures which shorten the waiting lists, repairs and improvement, training and family time off.

Except there hasn't been a 'summertime' since 2019 and Governors have instead observed relentless pressure. Across all our local health and care system, beds are full, staff are tired and, like everyone else, the hospital sees the impact of bills rising faster than income. Your Governors have been well briefed by the hospital team and have been able to question on your behalf. We saw the difficult decisions to delay planned procedures to deal with the pandemic and have seen patients ready to leave our wards with

nowhere to go, unable to be released. As a result, urgent admissions become more difficult for our busy Emergency Care teams.

Governors attend to observe the Trust's senior committees to see that the plans we approve are working to fruition and we appoint Non-Executive Directors to work on the Trust Board. These are our experts who bring Governors an informed insight and broaden the skills of the Board; we're currently filling one of these posts to supplement our finance skillset.

Recent changes in Government requirements mean Trusts, and their Governors, need to plan services more collaboratively. To this end, your Governors must now recognise this joint working, particularly across the 10 districts of Greater Manchester, and we have been examining the best ways to improve plans to create healthier communities with reduced inequality.

Despite these difficulties, it has been encouraging to see your Trust working steadily over the last three years, seizing opportunities through innovation to benefit patients. Improvements include expanded diagnostic facilities, better theatres, and both physical and virtual ward space. Research within the Trust is also finding new ways of improving care for us and our families, whilst helping to maintain best care and clinical standards.



# Getting to Know You: Leanne Cobham, Armed Forces Healthcare Lead

Since taking on the role of Armed Forces Healthcare Lead at WWL, Leanne Cobham has strived to ensure that WWL is an inclusive place for our Armed Forces Community in the Wigan Borough.

From helping WWL to achieve 'Gold' Veteran Aware status to setting up the Guaranteed Interview Scheme for our Armed Forces Community, Leanne has been pivotal in transforming the care we provide for veterans and providing them and their families with greater opportunities within the Trust.

Leanne is also part of an Armed Forces family and recently spoke on her own experiences and how this, combined with her experience working in the NHS, has put her in a prime position to improve the standard of care Wigan's Armed Forces Community has access to.

"After growing up in Euxton I made the move to RAF Brize Norton with my husband, currently a Flight Sergeant in the RAF, along with many house moves in the ensuing years, however after having my children I moved back to Lancashire to really put down roots" says Leanne.

"It was during the times when my husband was away from home on deployment that I found it very difficult not having family around to support me – something those in Armed Forces families I'm sure will relate to."

Following a successful career in banking Leanne retrained as a nurse, and, since 2014, has held several roles working across various children's wards, high dependency and neonatal units, as well as working with children with additional and complex needs and safeguarding.

"The Armed Forces Healthcare Lead is a new role at WWL which aims to support all members of

the Armed Forces Community as they regularly face numerous challenges that are often unique and difficult to explain to people who have never experienced them.

"As the Armed Forces Healthcare Lead here at WWL, I love using my experiences of both living within the Armed Forces community, and my NHS career to provide the best care possible for veterans, those still serving, and the wider community."

As a Veteran Aware Trust, WWL, led in this area by Leanne, promises to ensure none of the Armed Forces Community will face any disadvantage to other citizens when accessing healthcare.

Since joining WWL, Leanne has worked hard with colleagues to ensure Veterans receive the same level of exceptional care as all our patients, however, Leanne has certainly extended her work beyond this remit.



Leanne Cobham, Armed Forces Healthcare Lead

Through the Guaranteed Interview Scheme (more on page 7) – a project for all members of the Armed Forces community applying for jobs at WWL - Leanne is helping provide opportunities to veterans across the Borough, whilst also utilising their specialised experience to contribute towards our workforce.

In turn, Leanne has been recognised for her outstanding work being selected as a finalist in the 'Celebrating Armed Forces Families' Awards as Armed Forces Advocate of The Year.

Leanne elaborated on the work she has already done and continues to do to help improve the standard of care and the amount of opportunities WWL provides for veterans, adding: "The Guaranteed Interview Scheme is a huge step forward for WWL in our commitment to supporting our Armed Forces community.

"The Armed Forces community offers invaluable skills and knowledge to many jobs across the NHS and I'm delighted we are looking at new ways to attract them to join us.

"Also, as part of WWL's commitment to the Armed Forces community here in Wigan, veterans can expect special consideration where appropriate when accessing healthcare.

"This ensures that none of our veterans or their families face any disadvantages compared to other members of the public.

"Over the past few months I have also been working on providing extra training and support for WWL staff so that they can better understand the specific health needs of our Armed Forces community and the unique challenges that they face.

"In turn, this has allowed us to provide a first-class healthcare experience for our Armed Forces community and we are able to signpost them on to other bespoke services to meet their health and social care needs.

"On the whole, by providing this high-quality healthcare for our veterans this has allowed us to maintain our 'Gold' Veteran Aware status."

## Awards Season is Upon Us



Anne Allen,  
Midwifery Support Worker

This time of year is always an exciting period, as teams and individuals from across the Trust begin to showcase themselves at annual awards ceremonies across the healthcare sector, at events such

as the various Health Service Journal Awards, the Nursing Times Awards and on a regional level at the Greater Manchester Health and Care Champion Awards, to name just a few.

Teams have been working hard to submit a whole host of innovative and impactful projects for the variety of upcoming ceremonies, and we already have some great news to shout about with shortlisting early in the year.

Congratulations are in order for Community Nurse, Abbey Molloy, who studies at Manchester Metropolitan University and has been shortlisted at the 2023 Student Nursing Times Awards in the Learner of the Year: Post-registration category, as well as Anne Allen, one of our Midwifery Support Workers who has been shortlisted for the Midwifery Support Worker of the Year Award at the Royal College of Midwives (RCM) Awards 2023.

Anne is based at Boston House and works as part of WWL's Daisy Team of Midwives, where she support patients with additional needs during their pregnancy. Anne delivers practical parenting sessions on a one to one basis, alongside a specialist midwife for an identified caseload of patients, facilitated in the patient's home and Start Well centres in the Wigan Borough.

Look out for more awards news as it happens by following WWL on social media via Twitter, Facebook, Instagram and LinkedIn.



# Work Continues on Leigh Infirmary's Community Diagnostic Centre



Work taking place on the new Community Diagnostic Centre, Leigh Infirmary

Work is continuing at pace on the fantastic new Community Diagnostic Centre (CDC) and Theatre Development at our Leigh site.

Following the ground-breaking ceremony last December, new photographs of the development show the progress of the work being carried out by contractor, Carefoot, set to be completed by Winter 2023.

The new development is just one part of WWL's programme of investment into patient services at Leigh Infirmary, to expand on and provide a modern 'one stop shop' diagnostics and healthcare facility.

The work to build the additional theatre, alongside the CDC scheme, will create a new surgical hub facility to expand the range of procedures which can be undertaken at Leigh

Infirmary, meaning fantastic news for WWL patients and the surrounding area.

WWL was named as one of 13 recipients of a regional £130.3 million surgical hub scheme across the North West that will help to provide over 137,800 additional procedures and appointments a year for patients in the region waiting for treatment.

The CDC is set to improve provision of diagnostics for patients nearer to their homes in areas which are under-served, in as few visits as possible, and to support joined up care between secondary, community and primary care. This will, in turn, free up capacity at WWL's Royal Albert Edward Infirmary site at Wigan for urgent diagnostic tests, resulting in shorter waiting times. Patients can expect faster access to diagnostics and quicker outcomes alongside an improved experience.

# Innovative Project to Help Patients Living with Dementia

A member of our WWL Family has developed an innovative project to help improve communication for patients with dementia.

Kellie Baldwin, a Deputy Team Leader Operating Department Practitioner, at the Trust's Royal Albert Edward Infirmary site, has created the 'Living with Dementia Theatre Passport' for use within the theatre department for a cause which is very close to her heart.

As part of a Quality Improvement project, Kellie wanted to make a difference to patients who have dementia, and their relatives, something which means a great deal to her, both personally and professionally.

"I am a carer for my mum, who has vascular dementia," says Kellie, "my dad has Alzheimer's and my aunty, who also has vascular dementia has sadly now had to go into full time care, so dementia care is something that is very close to my heart. I wanted to improve communication for patients with dementia that arrive in our theatres for surgical intervention, so came up with the 'Living with Dementia Theatre Passport'."

The passport is a short A5 size document that patients and relatives can fill in on the day of their surgery to highlight to staff important information such as a patient's preferred name, who will be supporting them, what makes them feel anxious and what makes them feel calm. Also in the passport are colourful and engaging images to help patients communicate their emotions, if they are in pain, or if they are too hot or too cold, and it will be used to support patients throughout their surgical journey, as well as provide reassurance to carers of the care their loved one will receive.

"When working in anaesthetics in theatre you are the first point of contact for patients who arrive," adds Kellie, "I became aware of patients with dementia who were arriving with very little information with them, and I really felt for them.

These are somebody's loved one and, speaking as a carer, I would want to know that my family member is given high quality care when in hospital. Equally, as professionals, we are the patient's voice, and they are vulnerable so I want to be able to provide care to patients as though they were my own relatives."

From the initial pilot test of the Living with Dementia Theatre Passport, Kellie has received positive feedback from both staff, families and patients, and presented the project at the Trust's 'Dementia Day' conference.

"I collected a patient for theatre from our Emergency Department and the passport had already been completed by their relative. On arrival to theatre, the anaesthetic practitioner read the passport and as the patient started to become distressed in the anaesthetic room, the passport illustrated that holding the patient's hand would calm them. The anaesthetic practitioner did this and it really helped the patient and members of the team" says Kellie.

Mark Oakley, Admiral Dementia Nurse, who is the lead for dementia care at the Trust says: "The families I have spoken to feel this is a really great innovation in caring for their relatives. It is such a small piece of information, but it has had such a positive impact on patient care."



Kellie Baldwin and Mark Oakley by the Dementia Passport board in Theatres



# WWL Introduces Guaranteed Interview Scheme For Veterans

WWL is proud to have recently introduced a guaranteed interview scheme to all members of the Armed Forces community applying for roles within the Trust.

Members of the Armed Forces community applying for roles at WWL will be offered interviews, when all the essential job criteria for opportunities are met, supporting the pledges in WWL's Armed Forces Covenant and the Trust's accreditation as a 'Gold Award' Employer.

Leanne Cobham, WWL's Armed Forces Lead spoke on how the scheme will benefit Wigan's Armed Forces community saying: "This is a huge step forward for WWL in our commitment to supporting our Armed Forces community and really brings to life what it means to be a 'Gold Award' accredited Employer.

"The Armed Forces community offer invaluable skills and knowledge to many jobs across the NHS and I'm delighted we are looking at new ways to attract them to join us at the Trust."

By providing guaranteed interviews, WWL is helping veterans across the Wigan Borough to demonstrate their skills beyond the initial application stage and provides greater employment opportunities for Wigan's Armed Forces community.

The scheme does not offer a guaranteed job but does allow veterans, reservists and their families a better chance to find work.

Sarah Atcha, Recruitment Manager at WWL commented on the benefits this will have for both the Trust, and Wigan's veterans stating: "WWL is committed to assisting the Armed Forces community to overcome employment barriers.

"We recognise the invaluable contributions and transferrable skills the Armed Forces community can bring to healthcare, and we welcome more applications from those looking to bring their military expertise into the NHS."

You can find more information on this scheme by visiting the WWL website.

# WWL Radio – Our Hospital Radio Celebrates 50 Years on Air



WWL's own hospital radio station, which broadcasts 24 hours a day, seven days a week, entertaining, educating and informing patients and staff at the Trust, is celebrating a staggering 50 years on the airwaves.

The very first broadcast on WWL's hospital radio service was simply coverage of Wigan Rugby League Club fixtures in the 1950s, but in 1973 Wrightington Hospital Radio was officially established, becoming the station we know and love today.

Just last year, 'Wrightington Hospital Radio' became, 'WWL Radio' to better reflect the wider community the station broadcasts to. The station's schedules offer a wide range of programmes, from live to pre-recorded and auto generated programmes, and are broadcast direct from a studio in the cafe area at Wrightington Hospital.

Visits from staff, visitors and patients are always more than welcome when there is a presenter in the studio.

All broadcasts are available through the Hospedia units at Royal Albert Edward Infirmary (RAEI), and listening is free. At our other hospital and community sites, the station is available via the Trust's wifi or other internet provider, to anyone at anytime and anywhere.

Recently, WWL Radio's studio has been upgraded with new equipment and software to meet professional standards, thanks to a generous donation from the League of Friends Charity.

The WWL Radio team often broadcasts live from across the community and last year this included special programmes from the Armed Forces Remembrance Day Service at the Chaplaincy at RAEI and the Christmas Carol Concert from the Lancashire Mining Museum to name just two.

WWL Radio is always on the lookout for new volunteers to spare an hour to help keep the station running and radio experience is not needed as training can be provided. To find out more contact: [volunteer@wwl.nhs.uk](mailto:volunteer@wwl.nhs.uk).



Kevin Riley from WWL Radio interviewing Gary Wilkes at the Wrightington Family Fun Day



Leanne Cobham (second from left) and Sarah Atcha (right) with Alicia Amy Cobham, T Level Student (left) and David Lowe and Tom Knight from the charity Walking with the Wounded

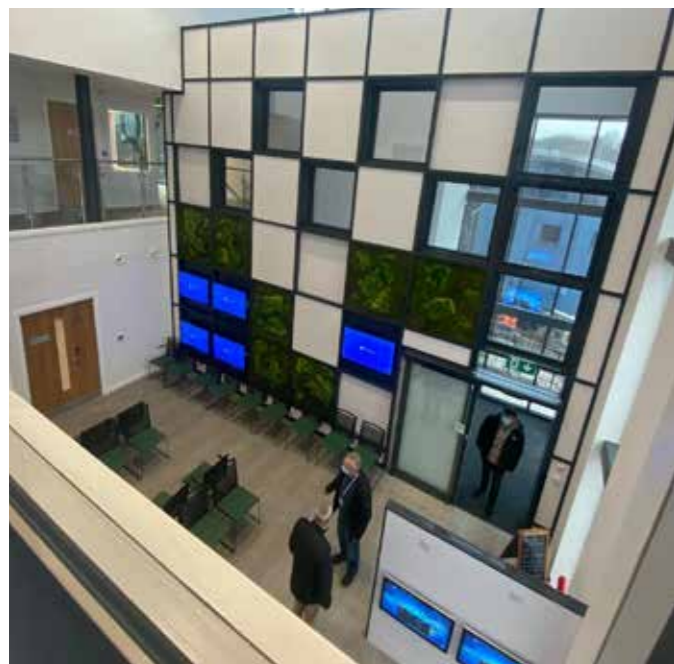
**To listen to WWL Radio via Hospedia just follow the details on the Hospedia units at the Royal Albert Edward Infirmary.**

**You can also listen on-line by visiting [www.wwlradio.co.uk](http://www.wwlradio.co.uk) and clicking on the 'listen live' box at the top of the page.**



# Brand New Health and Wellbeing Centre Opens its Doors in Aspull

The highly anticipated Aspull Health and Wellbeing Centre has opened its doors, with a comprehensive range of healthcare services now available to the Aspull community from a modern and forward-thinking facility.



Interior of Aspull Health and Wellbeing Centre

Aspull Health and Wellbeing Centre is the result of a multi-million-pound project between WWL, Aspull Surgery, and OneMedical Property, with support from NHS Greater Manchester Integrated Care Board and Wigan Council.



Artist's impression of Aspull Health and Wellbeing Centre

Speaking about what the facility will bring to Aspull, WWL's Chief Executive, Silas Nicholls, said: "It's a very proud moment for everyone involved in creating this excellent new facility for people living in the local area.

"As a modern, fully integrated healthcare facility, Aspull Health and Wellbeing Centre provide people with access to a range of WWL services.



"The new centre offers top level facilities for the local community and has been designed specifically for the residents of Aspull and the surrounding area to ensure inclusive access for current and emerging healthcare needs."

WWL's District Nurses will be delivering services from the centre.

Rachel Beverley-Stevenson, Executive Chair and Property Director at OneMedical Property, added: "We've built the new centre around our principles of making healthcare more accessible for the community. We are really proud of this scheme; it's pulling together essential community services within a legacy building for the people in Aspull."

# WWL Recruitment Drive - Investing in Our Future

As part of the drive to grow our workforce, WWL has hosted, and continues to host a variety of recruitment events.

The first of these events was the recent Theatres Recruitment Event which took place at Wrightington Hospital's Conference Centre on Saturday 11th March.

The event was attended by 61 job seekers, all looking to join our theatres departments in a variety of roles, including Operating Department Practitioners, Theatre Nurses and Theatre Assistants. A total of 31 interviews were also coordinated on the day.

On Thursday 16th and Wednesday 22nd March, the Estates Team ran two well attended recruitment events for Domestic staff at Wigan and Leigh College and Leigh Infirmary. Interviews were coordinated on the day, and job offers were given to local people looking for opportunities to begin a career in the NHS.

The next of these events will be held on Thursday 18th May when the Midwifery



Recruitment Day takes place at the Education Centre at Royal Albert Edward Infirmary.

As part of the Midwifery Recruitment Day, attendees will have the chance to hear from key speakers from several different specialties, chat with newly qualified Midwives and apply to Band 5 Midwifery vacancies.

Sarah Atcha, Recruitment Manager at WWL spoke on the Trust's recruitment events saying: "Recruitment events provide maximum return for our Trust and for attendees. We can recruit at scale, whilst also providing applicants with a valuable insight into our fantastic services.

"We are excited about hosting more events this year, giving local people the opportunity to see why WWL is a truly brilliant place to work."



The launch of two new recruitment social media pages have been critical to supporting event registration by delivering targeted messaging to online talent communities.

You can explore these pages and keep up to date with our future career events by following us on Twitter [@WWLCareers](https://twitter.com/WWLCareers) and Facebook [@WWLNHSCareers](https://www.facebook.com/WWLNHSCareers).



# New Research Hub Officially Opens in Ashton-in-Makerfield



WWL's Research Team with other WWL team members at the Research Hub in Ashton-in-Makerfield

A previously unused health clinic has been transformed into a bespoke and accessible clinical research hub based in the community of Ashton-in-Makerfield.

During the official opening, WWL's Chair Mark Jones welcomed all those in attendance and spoke on the hard work that has gone into opening the new Research Hub and what it will bring to the local community.

Mark said: "This is a real milestone for our Trust and one which has helped us to achieve a key objective of our recently published five-year research strategy 'Research for All' within the first year of its publication.

"This facility means we can spread out our research portfolio into the community and set up

studies locally in combination with our partners across the borough and beyond.

"I would like to thank our Estates and Facilities teams who oversaw this incredible refurbishment, the Greater Manchester Clinical Research Network for providing funding for some of the clinical equipment around the Hub, and the Research Team themselves for getting the Hub up and running."

WWL's Director of Strategy and Planning, Richard Mundon said: "This is a major success for our Trust. Having such a facility embedded within the community provides more opportunities to collaborate with NHS colleagues working in community and primary care, as well as an attractive alternative to research participants attending hospital.

"Our ethos is to be able to offer more research to our patients and for this research to be easily accessible to our patients, closer to home."

The opening of the Research Hub achieves a key objective within the first year of the Trust's recently published five-year research strategy, 'Research for All' and will improve visibility of WWL's research in a community setting, being centrally located and covering a wider area across the Wigan Borough. It will also offer more opportunities to integrate with the Healthier Wigan Partnership (health and care providers across primary, community, mental health, social care, and secondary and specialist care) and schools.

Alison Robinson, Head of Research who leads the research teams at the hub said: "We are very proud of our new facility and have so many interesting studies happening already, with around 100 studies being run across the WWL and more in the pipeline.

"Currently, we are the only centre in the North West to be part of the LISTEN study, which looks into long-COVID management support and we are also part of the Evarest Study, which may help us improve the future diagnosis and management of patients with heart disease.

"On the horizon we will be involved in the ELSA study where the WWL Research Team will engage with local schools to enable local children aged three-13 years to be screened for risk of insulin dependent diabetes and offer the opportunity also to trial a new app, called Lumi Nova, which uses exposure therapy to recreate scenarios that anxious young people may struggle with."

The Trust was also able to purchase new and essential clinical research equipment for the new facility, thanks to a grant provided by The Greater Manchester Clinical Research Network (GMCNR).



Internal shots of the new Research Hub



# Pioneering Virtual Ward Celebrates One Year Anniversary Milestone

Our pioneering Virtual Ward programme celebrated its one year anniversary recently.

With over 1,554 patients cared for to date, saving a total of 5,853 hospital bed days, the Virtual Ward Team cares for patients in their own home, using state of the art technology and has been so successful that the programme is now being trialled by other Trusts across the country.

WWL was one of the first Trusts to adopt the Virtual Ward programme in January 2022 and it has become a more efficient and safe solution to treat patients with a range of health conditions including respiratory and blood pressure issues, heart failure, frailty, diabetes, and COVID-19.

Patients who are deemed suitable for care on the Virtual Ward are provided with equipment to monitor their vital signs– blood pressure, pulse, heart rate and skin temperature – every 15 minutes, along with a tablet computer for video calls with their care provider, be that a nurse, allied health professional or doctor.

When patients no longer require hospital care but have not yet fully recovered and still need some monitoring, they may be suitable for Virtual Ward care, which is when the team will come together to provide the relative support.

Alison Chadwick, Clinical Quality Lead (virtual care) in WWL's Community Division, said: "Our team will go onto the ward to fit our patients with a kit and teach them how to use it.

"While it is simple to use, some people may be unfamiliar with technology, so our staff can visit them at home to make sure they know what to do and we are always at the end of the phone to support in any way we can."

A team of medical staff are based at the Virtual Ward hub at Chandler House, Poolstock, and at the Wigan Infirmary site. They monitor the

information from the equipment and are available to speak to patients between 8am and 8pm every day and, should further tests or treatment in hospital be required, the patient does not need to go through the A&E department.

One major benefit of the Virtual Ward is that patients are able to recover in familiar surroundings and with their home comforts. One patient who feedback to the team commented that "no one makes a cup of tea like my wife's cup of tea."

The risk of cross-infection in a hospital is also eliminated. Less than five per cent of patients on the Virtual Ward return to hospital and the majority of patients – 95 per cent – leave the service and would recommend it to other users.

There are currently 45 beds on the Virtual Ward, with staff being recruited to extend this to 60 and an aim to increase this to 150 over the coming year.



# Wrightington Hospital's Dedicated Bone Bank



Patients who would like to donate bone (either the head of the femur or femoral head) simply have to complete a medical history questionnaire during their appointment prior to surgery and on the morning of your operation will be asked to give two blood samples.

These blood samples will be tested to ensure the donated bone is safe to use in transplant surgery. If you are having a hip replacement and would be interested in donating your bone speak to your pre-op nurse or for more information give the Bone Bank Team a call 01257 256 452 / 435 or email [Bonebank@wwl.nhs.uk](mailto:Bonebank@wwl.nhs.uk).

As a dedicated Orthopaedic Centre of Excellence, Wrightington Hospital is home to its very own Bone Bank.

Set up in 1990, Wrightington's Bone Bank became independent in 2015, which allows clinicians to harvest femoral heads from patients, rather than having to purchase them from outside suppliers, thus ensuring a steady supplier of the necessary donations in a much more cost-effective way.

Now, the team want to encourage those patients who come in to have their hip replaced, to think about donating their bone to help another.

Lisa Smith, Bone Bank Facilitator, said: "If a patient has suffered bone loss due to a disease, injury, or previous surgery, this can be replaced by using small pieces of donated bone that has been harvested in our theatres and stored in our minus 80 freezers in our Bone Bank.

"Most people can donate their hip bone and giving your bone will not affect the care you receive in any way or make a difference to the operation or recovery."

Donations are crucial to some revision surgeries, such as hip, knee and shoulder replacements, as bone which is lost can be replaced with bone from the donated femoral head.



Bone Bank team (l-r) Jackie Neil left, Lisa Smith centre, Sam Ozdemir – Mr Bodo Purbach (back)



# Pioneering Surgical Technique Showcased by WWL Surgeon

A pioneering surgical technique has been demonstrated at a world-renowned healthcare conference for the first time by a surgeon from WWL.

Mr Matthew Liew, a Consultant Urologist, showcased the male circumcision surgical technique in front of a packed audience at the Future Surgery 2022 meeting at ExCel London in November.



Mr Matthew Liew at the Future Surgery Conference

The novel approach is a step change for urologists, reducing surgery times to a five minute procedure instead of 30 minutes, which is the current standard in the UK.

It also avoids cauterisation and reduces surgical time by up to 80% by using CircCurer™, an innovative circumcision device that also means a quicker healing time and a reduced need for post-surgery painkillers.

Mr Liew said: “The largest UK urology waiting lists are for circumcision surgery, and together with the COVID-19 backlog, this has highlighted the need for theatre efficiency, including more operations converted to local anaesthetic.

“All of our 56 mainly WWL cases, were presented during the demonstration. Key highlights included

93% high cosmetic satisfaction scores with no one unhappy, and 84% of patients recommending the procedure.

“I was grateful for the opportunity to demonstrate this new surgical device in a specifically designed surgical simulation area which replicated a fully working operating theatre. Since this meeting, we have supported a number of surgeons, including a specialist centre in London who now offer CircCurer™ as well”.



Mr Matthew Liew, Consultant Urologist

Delivered in partnership with The Royal College of Surgeons of England, the Future Surgery Exhibition was the biggest gathering of surgical and operating theatre teams with over 100 exhibitors and over 100+ speakers in attendance.

# Choose the Right Healthcare Options For You

From self-care and NHS 111, right through to urgent care and our Emergency Department at WWL, it's vital that everyone chooses the most appropriate WWL or NHS service for their needs, as it ensures the right level of care is given, and treatment can be given sooner.

By accessing the right service, it also means that our healthcare system can operate efficiently and safely, and reduce the pressure in our hospitals, allowing us to provide our urgent and emergency services for those who really do need hospital treatment.

Finding the right treatment for you will always be based on the symptoms you have, and if a condition is life, limb or sight-threatening it is important to stress that you should call 999 or present at our Emergency Department. For other conditions, there are a range of healthcare options, including:

- Advice and support via NHS 111 online available at [www.111.nhs.uk](http://www.111.nhs.uk)
- 24/7 Mental health support through the Greater Manchester Mental Health NHS Foundation Trust crisis line on 0800 953 0285 for free

- Pharmacies for expert advice on minor illnesses and injuries, and over-the-counter medicines
- Dental care for mouth, teeth or gum pain via your nearest dentist at [nhs.uk/service-search/find-a-dentist](http://nhs.uk/service-search/find-a-dentist)
- Eyecare through your nearest opticians at [primaryeyecare.co.uk](http://primaryeyecare.co.uk)
- Your GP practice, with access to a range of healthcare professionals for in-person and online consultations
- Urgent Treatment Centres, such as the one at Leigh Infirmary, for urgent medical help that is not life, limb or sight-threatening
- The Emergency Department and 999 for life, limb or sight-threatening conditions

You can find out more about in detail through the 'Get to know where to go' handbook and online resources, available to you by clicking here.

If you remain unsure about where to go, visit [111.nhs.uk](http://111.nhs.uk) online.

FROM **BROKEN THINGS** TO **SPRAINED LIMBS**

GET TO KNOW WHERE TO GO

Find the treatment you need at [111.nhs.uk](http://111.nhs.uk) or call 111



# Governor Focussed News

## Council of Governor Elections

Governors volunteer their services to represent the views of us all, they come from staff groups, some of our partner organisations and mainly from the public in the area we serve.

Each year sees some refreshment of the Council as Governors come to the end of their terms, this year we bid farewell to the long-serving Bill Anderton, Linda Sykes and Pauline Gregory. Eligible for, and successful in seeking re-election, were Ken Griffiths, Les Chamberlain, Lisa Lymath and Mustapha Koriba.

Joining us as newly elected Governors, Alan Boardman, Andrew Bullen, Linda Taberner and Peter Allard, all Public Governors elected by the non-staff Membership.

We also said goodbye to Lindsey Derbyshire, one of our Staff Governors who leaves us with a vacancy to represent our Nursing and Midwifery staff.

## Meeting Dates and Locations – 2023

Due to pandemic restrictions, many of our meetings over the last few years have been held virtually. There may still be occasions when we have to hold meetings virtually however members of the public are now able to join us in these virtual meetings and are welcome to attend any of those listed below - if you are interested in coming along to observe, please contact [members@wwl.nhs.uk](mailto:members@wwl.nhs.uk) so that we can provide you with either the joining details, or the location of the meeting.

## Upcoming Board of Directors Meetings

Please note the start time and venue of each meeting is subject to change. This information will be updated on the website in advance of each meeting.

Wednesday 7th June, 1:15pm - 4:15pm  
Monday 19th June, 1pm - 2pm  
Wednesday 2nd August, 1:15pm - 4:15pm  
Wednesday 4th October, 1:15pm - 4:45pm

## Upcoming Council of Governors Meetings

Thursday 27th April, 5:15pm - 7:15pm  
Wednesday 19th July, 5:15pm - 7:15pm  
Tuesday 24th October, 5:15pm - 7:15pm

## Annual Members' Meeting

Wednesday 8th November, 1:15pm - 3:45pm, venue to be confirmed.

## Upcoming Digital Transformation event at WWL

Tuesday 16th May, 1:30pm - 2:30pm  
The Boardroom, Trust Headquarters  
Royal Albert Edward Infirmary.

Join our Chief Information Officer, Malcolm Gandy and our Chief Nursing Information Officer, Pam Green to find out more about the NHS's ongoing digital transformation.

They will talk to you about how digital supports a patient's journey; how artificial intelligence (AI) is being used to support patient diagnosis; the continued work being done to improve the Trust's digital services and much more. We are fortunate to have a very passionate team to support our Trust's digital journey – and they can't wait to meet you!

If you are interested in attending, we do have limited availability so please email [Members@wwl.nhs.uk](mailto:Members@wwl.nhs.uk) call Freephone 0800 073 1477 or direct line 01942 822186.

# Become a Member at WWL

There are a number of benefits to becoming a Member at WWL and these include:

- Attending events held by the Trust
- You can add this to your CV
- Receive NHS discounts
- Vote in Governor Elections or become a Governor yourself
- Receive the Members' Magazine straight to your inbox

You can join on the WWL website or via phone, email or post. Our Membership Office is open from 8:30am - 4:30pm Monday to Friday and can

be contacted via phone, postal mail or email on any of the following:

- Telephone number: 0800 073 1477
- Email address: [Members@wwl.nhs.uk](mailto:Members@wwl.nhs.uk)
- Postal address:  
Freepost Plus RUBT-HSSU-HGET  
Corporate Governance Manager  
Trust Headquarters  
Wrightington, Wigan and Leigh Teaching  
Hospitals NHS Foundation Trust  
Wigan Lane  
Wigan  
WN1 1XZ



Pictures from our most recent Annual Members' Meeting



# Fundraising and Donations



Recently, the WWL Three Wishes Charity has received a whole host of donations from both our staff and patients and has worked with partners across the Wigan Borough to raise further funds.

This can be seen through the incredible fundraising efforts of our Senior HR Business Partner colleague, Lorraine Woods.

Following her recent battle with cancer Lorraine was able to raise £15,500 for our Cancer Care fund to say thank you for the excellent care she received at WWL.

Lorraine organised a fundraising event at Ashton golf club where she helped to raise the money for the team who provided her with excellent care on the cancer care unit.

In addition to this, some of our patients have also been keen to say thanks for the care they, or their loved ones, have received at the Trust.

Recently, local couple Chloe and Martin Shiels from Swinley were able to raise over £1,400 for WWL's Neonatal Intensive Care Unit (NICU).

The couple's twin boys Solomon and Xander were born six weeks prematurely in May 2022 and were on put onto ventilators by the NICU Team before being deemed well enough to go home.

Back in September 2022, Martin ran the Wigan 10k as a thank you to the NICU staff and used the donations to buy thermometers, baby grows, blankets and bibs for the unit.

Shirley Martland, WWL's Associate Director of Finance spoke on these charitable acts saying: "All of us at WWL are extremely grateful to those who have made donations to the Trust.

"It's amazing to see the generosity in our local community and we are proud of the fact that

people want to give back after receiving care from WWL."

Thank you to all of our fundraisers for all of your efforts. No matter how big or small, every donation counts towards helping us fund projects, equipment and services to improve the environment and experiences of our patients.

If you have any questions about our Three Wishes Charity or would like information on making a donation please email: [ThreeWishesCharity@wwl.nhs.uk](mailto:ThreeWishesCharity@wwl.nhs.uk).



Martin and Chloe Shiels at the Wigan 10k

No matter how big or small, every donation that comes to WWL is used to help fund vital projects, services and equipment to help improve the services we provide for all of our patients.

If you would like any information on making a donation please email: [ThreeWishesCharity@wwl.nhs.uk](mailto:ThreeWishesCharity@wwl.nhs.uk).