



**Wrightington, Wigan and  
Leigh Teaching Hospitals**  
NHS Foundation Trust

# Going to the... Emergency Department - Easy read

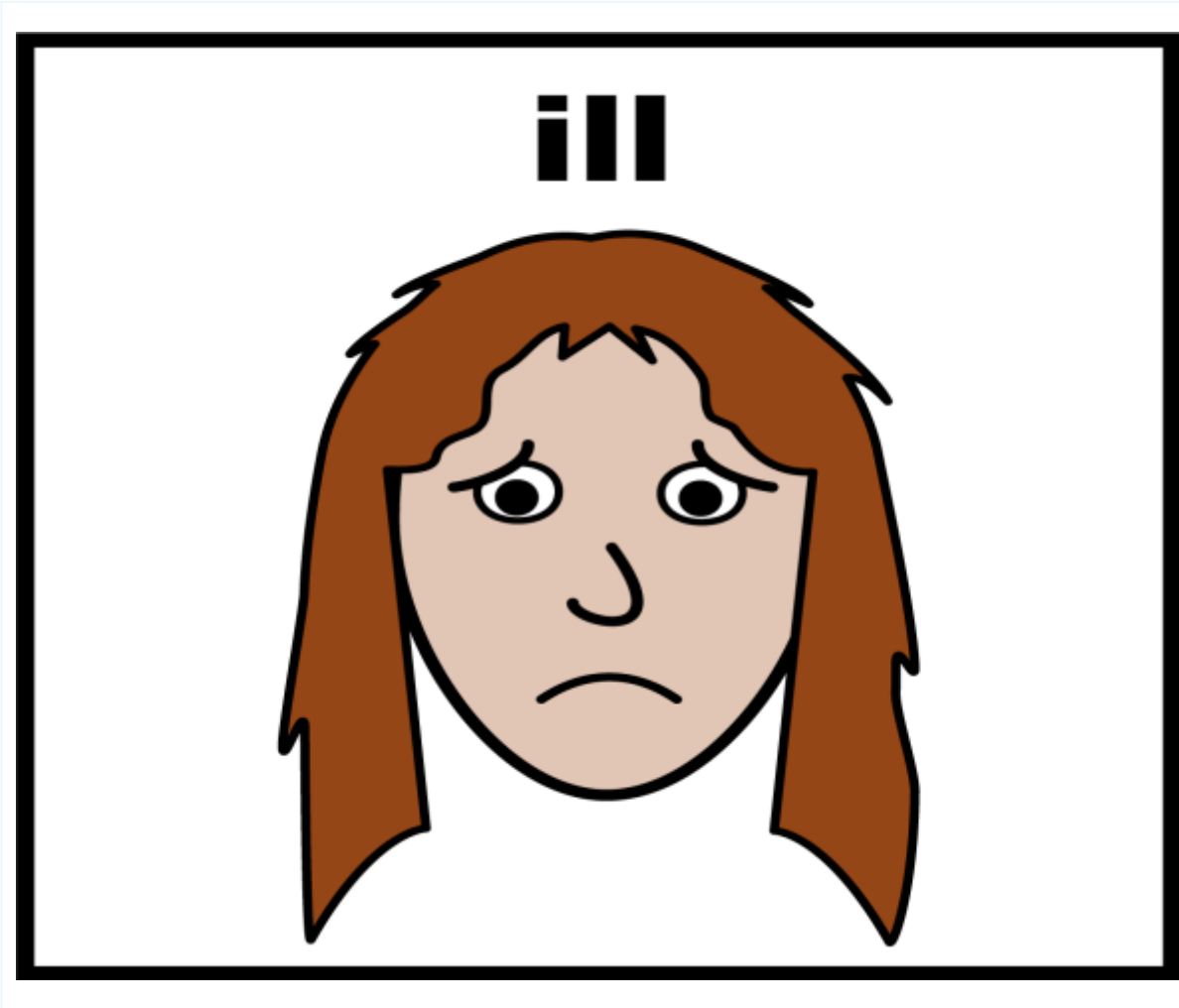
# Going to the Emergency Department

Patient and Carer Information

## Equality, Diversity & Inclusion

- Author ID: DJ
- Leaflet Ref: ER 001
- Version: 6
- Leaflet title: Going to the Emergency Department
- Last review: June 2025
- Expiry Date: June 2027

Emergency Department Journey



When you

go to see

Surgery -

# hurt



But, if you hurt yourself, you should go to hospital.

# ambulance



Sometime  
an ambula

Or your fa  
you.

# accident and emergency



When you

you will go

Departme

This was c

# reception

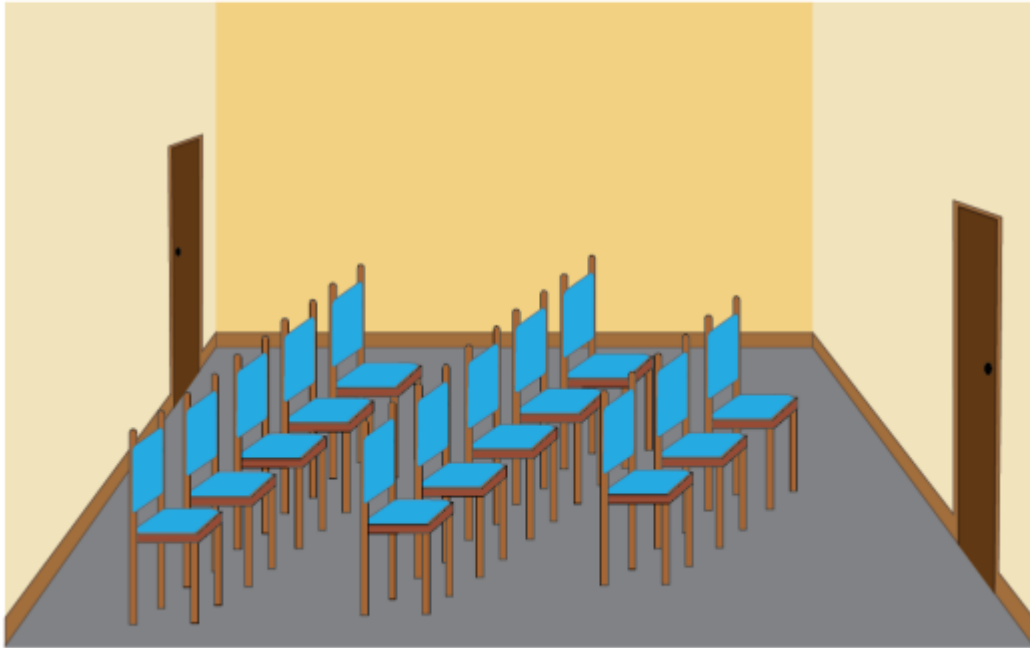


When  
Depart

Go to

You w  
and a

# waiting area



You w  
waitin

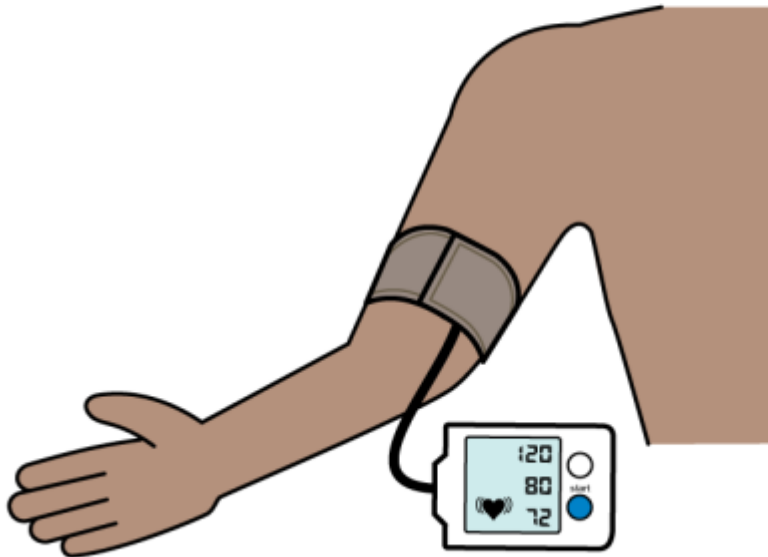
You w  
doctor

# ask you questions



A nurse  
into a  
questi

# blood pressure



They  
press

# high temperature



They mig

Tempera

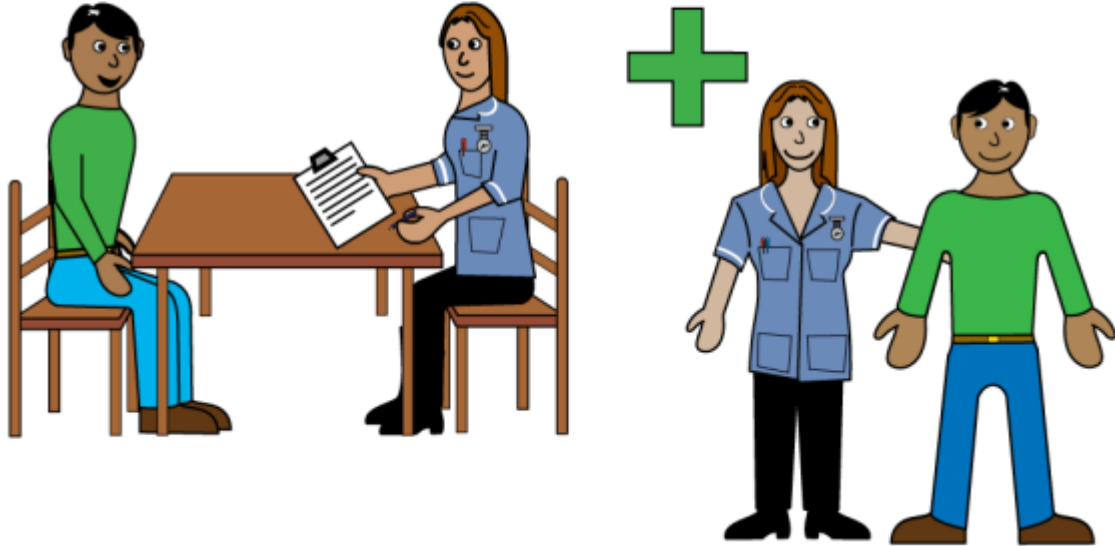
# doctor



You will t  
see the d

When yo  
will ask y

# assessment and treatment



They will  
or looking  
unwell.

If you are  
doctor or  
you.

# prescription



The doctor  
prescription

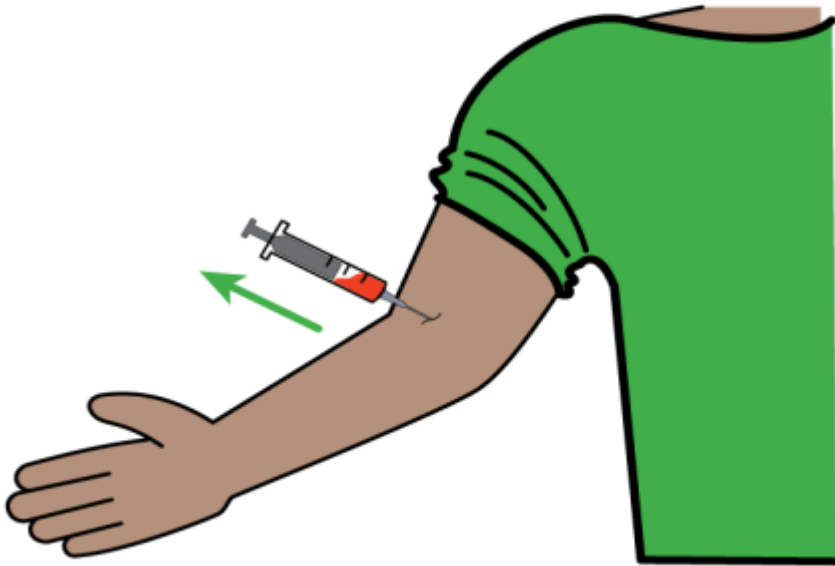
A prescription  
or tablets

# nurses



Or, the doctor might  
tests in other parts of the body  
find out what is wrong.

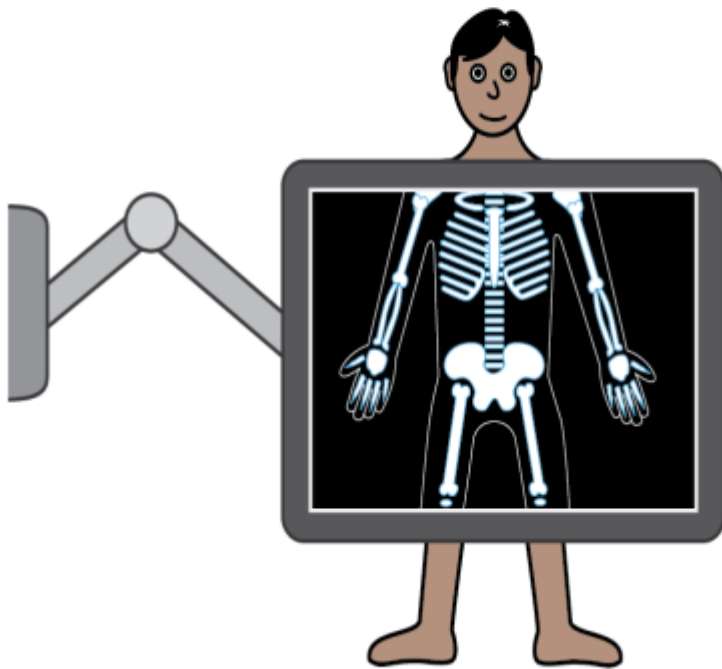
# blood test



These tests might

This can show the  
something that is  
unwell.

# x-ray



X-Ray

An X-Ray will take pictures of bones.

# scan

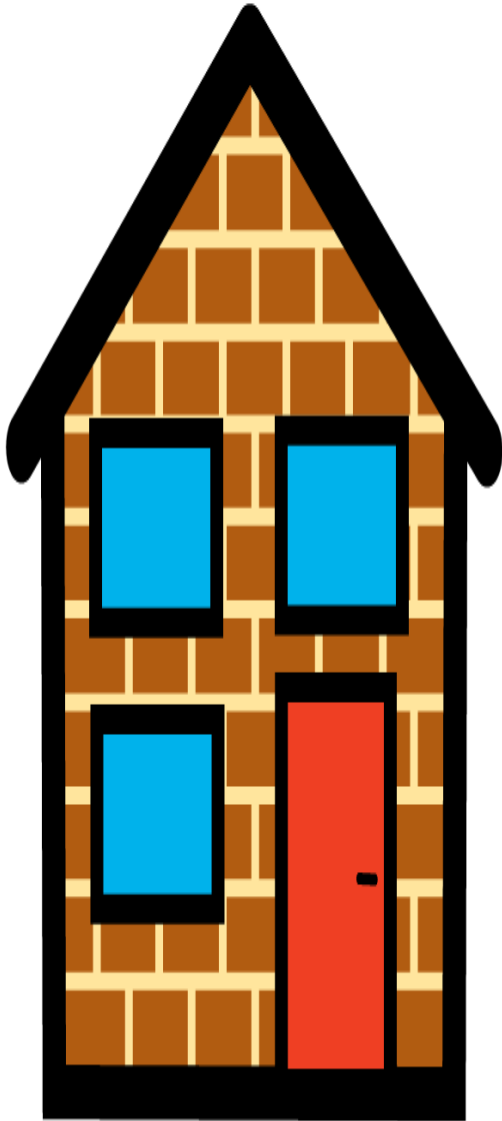


Scan

A scan can take  
your body.

This helps the do  
you are feeling ill

# home



Once the doctor has seen you and, if you are well enough.

You will be able to go home.

# hospital bed



If you are not well enough to go home.

You will stay in a bed in the hospital.

You will have treatment to make you feel better.

If you are worried or unhappy about your care, or you want to tell us how we can let us know.

You can use any of the 4 ways shown

# talking and listening



1.

You can tell the  
Emergency D

Or you can tell  
Department.

# letters



2.

You can writ

Patient Relat

Wrightington  
NHS Founda

Royal Albert

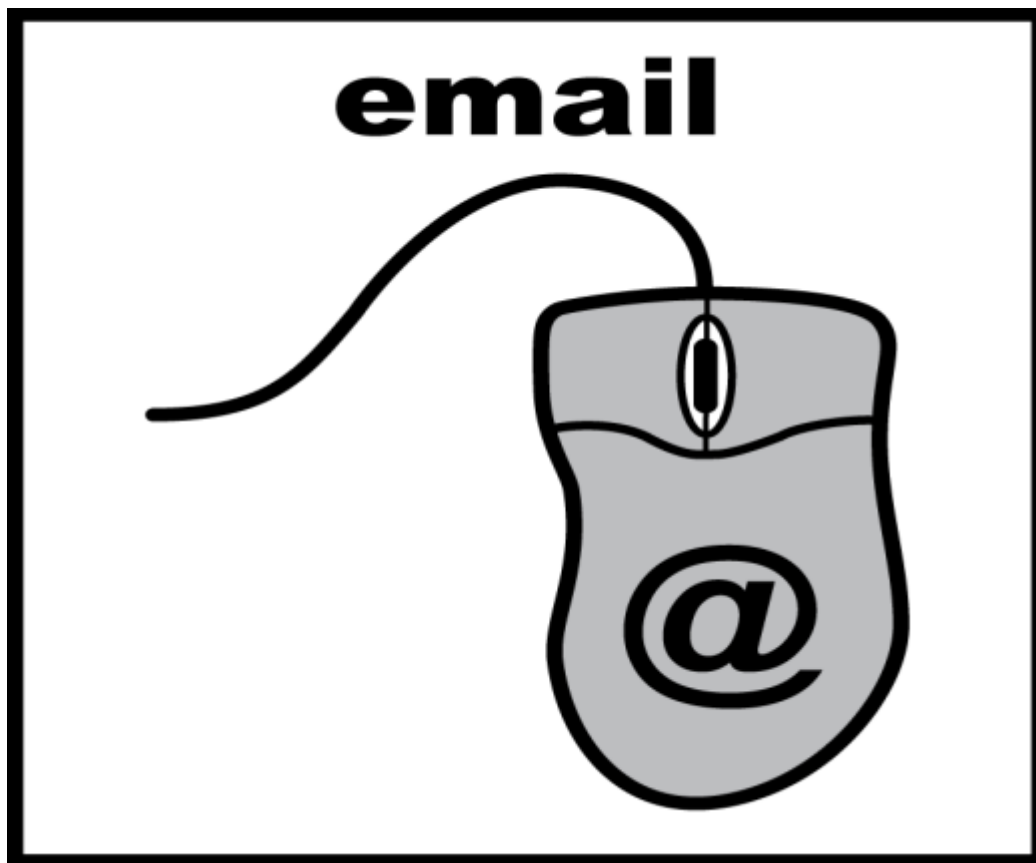
Wigan Lane,

# phone



3.

Or email us a  
Patient.Relat



1.

## Acknowledgement

All Images copyright © LYPFT - Leeds and York Partnership NHS Foundation Trust.





Version number: **6**  
Last modified date: **03rd July 2026**

All rights reserved © 2026  
WWL Teaching Hospitals NHS Foundation Trust