



**Wrightington, Wigan and  
Leigh Teaching Hospitals**  
NHS Foundation Trust

# Chaplaincy and Spiritual Care

# Chaplaincy & Spiritual Care

## Patient and Carer Information

- Author ID: AJE
- Leaflet ref: Corp 010
- Version: 8
- Leaflet title: Chaplaincy & Spiritual Care
- Last review: May 2024
- Expiry date: May 2026

## Chaplaincy & Spiritual Care

The Chaplains are there for everyone, of all faiths and beliefs or none, whose lives bring them into contact with the Trust.

Whether you are a patient, relative or carer, or a member of staff - we are there for you, to offer pastoral, emotional spiritual and religious care, wherever you are in the hospitals or in the Community.

### What are we there for?

Sometimes coming into hospital or a community setting, whether as a patient, relative or carer or even as a member of staff can be difficult, and you may need someone to support you. Chaplains are there for times such as these. We can visit all Trust sites by arrangement.

### Where are we?

The Prayer Rooms and Chapel are always open for a quiet space or prayer.

### Prayer Rooms and Chapel

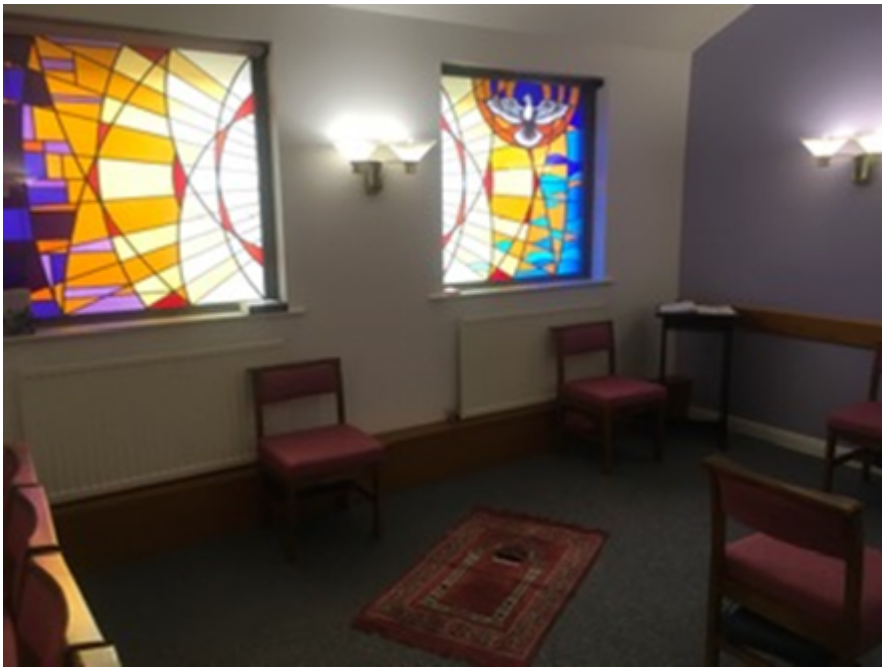
The Chapel and Multi- Faith Prayer Rooms are provided for staff, patients, and visitors to use at any time. We hope that in these, may be found a place to weep, a place to rejoice, a place to recollect in love and stillness, a place to pray and a haven for all who seek peace, understanding and comfort.



Multi-Faith Prayer Room.



The Chapel at Wigan Royal Albert Edward Infirmary.



Multi-Faith Prayer Room at Leigh Infirmary.



Multi-Faith Prayer Room at Wrightington Hospital

## How to contact the Chaplains

Chaplains are available 24 hours a day, seven days a week and can be contacted

either directly or through a member of staff.

If you would like to speak to a chaplain, please leave a message

01942 822324 or 822314 and a chaplain will get back to you as soon as possible, although it might not be the same day. Alternatively, you could email us on [Chaplaincy.SpiritualCare@wvl.nhs.uk](mailto:Chaplaincy.SpiritualCare@wvl.nhs.uk)

In an emergency the chaplains can be paged via the hospital switchboard, telephone: 01942 244000.



## A Prayer

O God, grant me the serenity to accept the things I cannot change.

The courage to change the things that I can.

And the wisdom to know the difference.



Version number: **8**  
Last modified date: **13th June 2026**

All rights reserved © 2026  
WWL Teaching Hospitals NHS Foundation Trust